

Supplier's Product Code :  
Product Added :  
Last Updated by Supplier :  
erudus id :

HFR3030NU  
17 January 2024  
17 January 2024  
5369416907094a1a8fbc8fe4c67cd01f



The information on the Erudus System has been supplied by the manufacturers of the products and, whilst the owners of the Erudus System take steps to ensure the information is regularly updated, they give no warranty and no guarantee that the information is accurate. Product information and ingredients may change, please always read product labels carefully in addition to using the information provided by Erudus One.

We do not accept liability for any inaccuracies or incorrect information contained on this site. Please visit <http://www.erudus.com/terms-and-conditions> for full terms and conditions.

## PROWRAP PROFESSIONAL 300MM x 300M CLING FILM

Short Product Name:

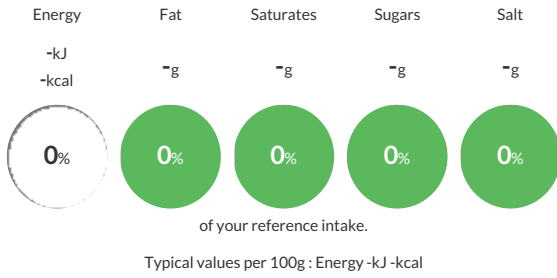
PROWRAP PROFESSIONAL 300MM x 300M CLING FILM

PROWRAP PROFESSIONAL 300MM x 300M CLING FILM

Traded Unit GTIN: 5027863600036 Internal GTIN: 5027863000034 Supplier: Wrapex Limited Suppliers Product Code: HFR3030NU

### Reference Intake

Each 100g portion contains:

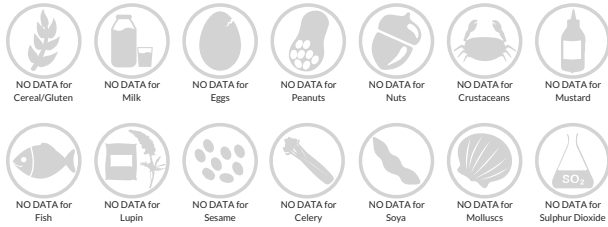


### Nutritional Information

Typical Values	Per 100g
Energy	-kJ -kCal
Carbohydrates	-g
of which sugars	-g
Fat	-g
of which saturates	-g
Fibre	-g
Protein	-g
Salt	-g

### Allergy Information

Key: Contains May Contain



### Dietary Information

Key: Suitable for



### Ingredients

N/A