

Supplier's Product Code :
Product Added :
Last Updated by Supplier :
erudus id :

12410542
06 April 2016
09 August 2022
55af983957ad4ce2b0c32e318a6824e9



The information on the **Erudus System** has been supplied by the manufacturers of the products and, whilst the owners of the Erudus System take steps to ensure the information is regularly updated, they give no warranty and no guarantee that the information is accurate. Product information and ingredients may change, please always read product labels carefully in addition to using the information provided by Erudus One.

We do not accept liability for any inaccuracies or incorrect information contained on this site. Please visit <http://www.erudus.com/terms-and-conditions> for full terms and conditions.

LION Milk Chocolate Bar 36x50g

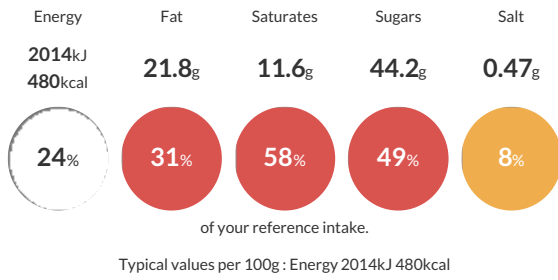
Short Product Name:
LION 36x50g

Filled wafer with caramel (35%) and cereals (8%) covered with milk chocolate (38%)

Traded Unit GTIN: **07613034989260** Internal GTIN: **7613034989253** Supplier : **Nestle UK** Suppliers Product Code : **12410542**

Reference Intake

Each 100g portion contains:



Nutritional Information

Typical Values	Per 100g
Energy	2014kJ 480kCal
Carbohydrates	64.9g
of which sugars	44.2g
Fat	21.8g
of which saturates	11.6g
Fibre	1.5g
Protein	5.4g
Salt	0.47g

Allergy Information

Key: **Contains** **May Contain**



Dietary Information

Key: **Suitable for**



Allergen Statement

Contains: **MILK** and **WHEAT**. May Contain: **SOYA**, **NUTS** and **PEANUTS**.

Ingredients

Glucose-Fructose Syrup, Sugar, **WHEAT** Flour, Sweetened Condensed **MILK** (**MILK**, Sugar), Cocoa Butter, Palm Oil, Whole **MILK** Powder, Cocoa Mass, Whey Powder (from **MILK**), Maltodextrin, Skimmed **MILK** Powder, **WHEAT** Starch, Emulsifier (Sunflower Lecithin), Salt, Raising Agent (Sodium Bicarbonate), Caramelised Sugar, Natural Vanilla Flavouring, Thickener (Carrageenan)