

Supplier's Product Code :
Product Added :
Last Updated by Supplier :
erudus id :

F10109
29 October 2024
29 October 2024
55b994ea219a489a8071e29479846680



The information on the Erudus System has been supplied by the manufacturers of the products and, whilst the owners of the Erudus System take steps to ensure the information is regularly updated, they give no warranty and no guarantee that the information is accurate. Product information and ingredients may change, please always read product labels carefully in addition to using the information provided by Erudus One.

We do not accept liability for any inaccuracies or incorrect information contained on this site. Please visit <http://www.erudus.com/terms-and-conditions> for full terms and conditions.

Jude's Truly Chocolate Ice Cream - 6 x 4L

Short Product Name:

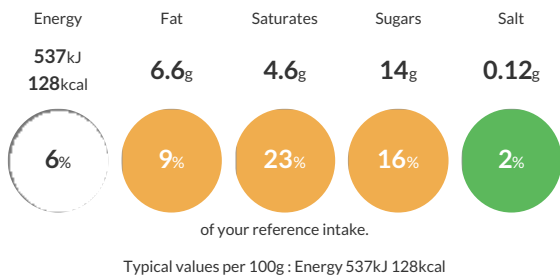
Jude's Truly Chocolate Ice Cream - 6 x 4L

Chocolate Ice Cream

Traded Unit GTIN: 05060081110215 Internal GTIN: 5060081110642 Supplier: Judes Ices Suppliers Product Code: F10109

Reference Intake

Each 100g portion contains:



Nutritional Information

Typical Values	Per 100g
Energy	537kJ 128kCal
Carbohydrates	14g
of which sugars	14g
Fat	6.6g
of which saturates	4.6g
Fibre	-g
Protein	2.8g
Salt	0.12g

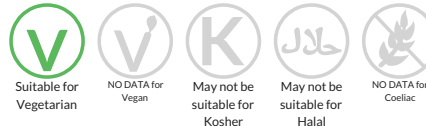
Allergy Information

Key: Contains May Contain



Dietary Information

Key: Suitable for



Allergen Statement

For allergens see ingredients in bold.

Ingredients

fresh whole **milk**, sugar, double cream (**milk**), skimmed **milk** powder, chocolate powder (4%) (sugar, cocoa mass, fat-reduced cocoa powder, natural vanilla flavouring), coconut oil, cocoa powder, dextrose, fat-reduced cocoa powder, emulsifier (mono- and diglycerides of fatty acids), stabilisers (locust bean gum, guar gum), bourbon vanilla extract, pasteurised free range **egg** yolk.