

Supplier's Product Code :
Product Added :
Last Updated by Supplier :
erudus id :

000380 (0716801)
30 June 2014
08 August 2022
568d8243756746a99de0d2844c1bc318



The information on the **Erudus System** has been supplied by the manufacturers of the products and, whilst the owners of the Erudus System take steps to ensure the information is regularly updated, they give no warranty and no guarantee that the information is accurate. Product information and ingredients may change, please always read product labels carefully in addition to using the information provided by Erudus One.

We do not accept liability for any inaccuracies or incorrect information contained on this site. Please visit <http://www.erudus.com/terms-and-conditions> for full terms and conditions.

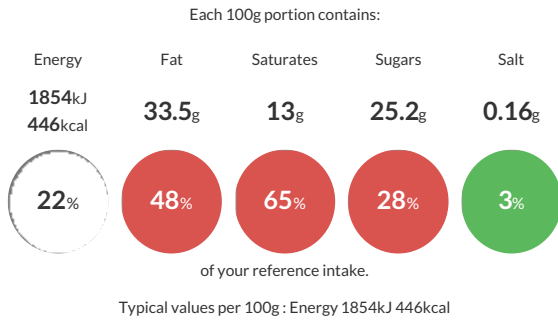
PREMIUM CHOCOLATE FONDANT, Frozen

Short Product Name:

Eggs, dark chocolate 22%, butter, sugar, sunflower oil, flour, milk, cocoa powder.

Traded Unit GTIN: **03700478571688** Internal GTIN: **03700478571688** Supplier: **Traiteur De Paris** Suppliers Product Code: **000380 (0716801)**

Reference Intake



Nutritional Information

Typical Values	Per 100g
Energy	1854kJ 446kCal
Carbohydrates	31.4g
of which sugars	25.2g
Fat	33.5g
of which saturates	13g
Fibre	1.9g
Protein	5.8g
Salt	0.16g

Allergy Information

Key: **Contains** **May Contain**



Allergen Statement

Notifiable allergens are indicated in bold text in the list of ingredients. May contain celery, crustaceans, nuts, sesame, mustard, fish, sulphites, molluscs, lupine and peanuts.

Ingredients

Whole **EGGS**, dark chocolate coating [59% cocoa] 22.4% (cocoa mass, sugar, cocoa butter, emulsifier: **SOYA** lecithin), butter (**MILK**), sugar, sunflower oil, **WHEAT** flour (**GLUTEN**), semi-skimmed **MILK**, cocoa powder 1.2%, baking powder (raising agent : diphosphates – sodium carbonates., **WHEAT** starch (**GLUTEN**)).

Dietary Information

Key: **Suitable for**

