

Supplier's Product Code :
Product Added :
Last Updated by Supplier :
erudus id :

FH0038
29 October 2024
29 October 2024
57140d1a63554328988215fdc2669071



The information on the Erudus System has been supplied by the manufacturers of the products and, whilst the owners of the Erudus System take steps to ensure the information is regularly updated, they give no warranty and no guarantee that the information is accurate. Product information and ingredients may change, please always read product labels carefully in addition to using the information provided by Erudus One.

We do not accept liability for any inaccuracies or incorrect information contained on this site. Please visit <http://www.erudus.com/terms-and-conditions> for full terms and conditions.

Jude's Triple Chocolate Stickbars 20 x 80ml

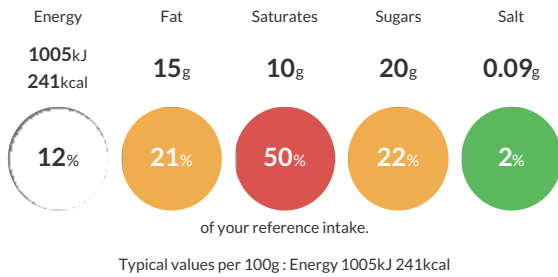
Short Product Name:
Triple Chocolate Stickbars

Chocolate ice cream with cocoa sauce, coated with Belgian milk chocolate, and cocoa biscuit pieces.

Traded Unit GTIN: 05060081116217 Internal GTIN: 5060081116071 Supplier: Judes Ices Suppliers Product Code: FH0038

Reference Intake

Each 100g portion contains:



Nutritional Information

Typical Values	Per 100g
Energy	1005kJ 241kCal
Carbohydrates	22g
of which sugars	20g
Fat	15g
of which saturates	10g
Fibre	-g
Protein	2.9g
Salt	0.09g

Allergy Information

Key: **Contains** **May Contain**



Dietary Information

Key: **Suitable for**



Allergen Statement

For allergens see ingredients in bold. Made in a factory that handles nuts and peanut.

Ingredients

skimmed milk, chocolate (29.5%) [sugar, cocoa butter, cocoa mass, whole milk powder, anhydrous milk fat, emulsifier (lecithins (contains soya)), Bourbon vanilla extract], cocoa sauce (7%) [sugar, water, cocoa powder, coconut fat, salt, cocoa extract], sugar, coconut oil, cocoa biscuit pieces (3%) [**wheat** flour, sugar, sunflower oil, fat-reduced cocoa powder†, salt], glucose syrup, cocoa powder (3%), dark chocolate (2.9%) [cocoa mass, sugar, cocoa butter, emulsifier (lecithins (contains soya))] Bourbon vanilla extract], lactose (milk) and milk protein, emulsifier (mono- and diglycerides of fatty acids), stabilisers (locust bean gum, guar gum).