

Supplier's Product Code :  
 Product Added :  
 Last Updated by Supplier :  
 erudus id :

32202  
 13 November 2024  
 13 November 2024  
 58f0fea04ab24e4f9d2ba316c39fa2b7



The information on the Erudus System has been supplied by the manufacturers of the products and, whilst the owners of the Erudus System take steps to ensure the information is regularly updated, they give no warranty and no guarantee that the information is accurate. Product information and ingredients may change, please always read product labels carefully in addition to using the information provided by Erudus One.

We do not accept liability for any inaccuracies or incorrect information contained on this site. Please visit <http://www.erudus.com/terms-and-conditions> for full terms and conditions.

## Sysco Classic Chocolate Dairy Ice Cream with Chocolate Chips

Short Product Name:

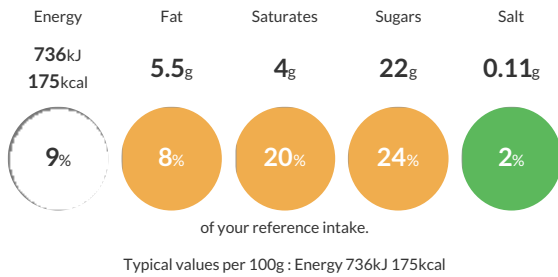
Chocolate Dairy Ice Cream with Chocolate Chips

Chocolate flavoured dairy ice cream with chocolate chips

Traded Unit GTIN: 05024333214182 Internal GTIN: 5024333143505 Supplier: Brake Bros Ltd Suppliers Product Code: 32202

### Reference Intake

Each 100g portion contains:



### Nutritional Information

Typical Values	Per 100g
Energy	736kJ 175kCal
Carbohydrates	27g
of which sugars	22g
Fat	5.5g
of which saturates	4g
Fibre	0.7g
Protein	3.7g
Salt	0.11g

### Allergy Information

Key: Contains May Contain

Does Not Contain Cereal/Gluten	<span style="border: 1px solid red; border-radius: 50%; padding: 2px;">Contains</span> Milk	Does Not Contain Eggs	Does Not Contain Peanuts	Does Not Contain Nuts	Does Not Contain Crustaceans	Does Not Contain Mustard
Does Not Contain Fish	Does Not Contain Lupin	Does Not Contain Sesame	Does Not Contain Celery	<span style="border: 1px solid red; border-radius: 50%; padding: 2px;">Contains</span> Soya	Does Not Contain Molluscs	Does Not Contain Sulphur Dioxide

### Dietary Information

Key: Suitable for

Suitable for Vegetarian	May not be suitable for Vegan	NO DATA for Kosher	NO DATA for Halal	NO DATA for Coeliac
-------------------------	-------------------------------	--------------------	-------------------	---------------------

### Ingredients

Water, Double Cream (<b>Milk</b>) (14%), Sugar, Chocolate Chip (7%)(Sugar, Cocoa Mass, Cocoa Butter, Emulsifier(<b>Soya</b> Lecithin), Flavouring), Buttermilk Powder, Whey Powder (<b>Milk</b>), Cocoa Powder, Emulsifier(Mono- and Di-Glycerides of Fatty Acids), Stabilisers(Guar Gum, Sodium Alginate).