

The information on the [Erudus System](#) has been supplied by the manufacturers of the products and, whilst the owners of the Erudus System take steps to ensure the information is regularly updated, they give no warranty and no guarantee that the information is accurate. Product information and ingredients may change, please always read product labels carefully in addition to using the information provided by Erudus One.

We do not accept liability for any inaccuracies or incorrect information contained on this site. Please visit <http://www.erudus.com/terms-and-conditions> for full terms and conditions.

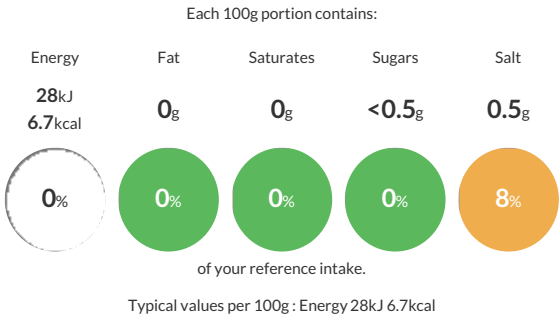
CUISINEWINE Pardina White Cooking Wine 4x3L BiB

Short Product Name:  
White Cooking Wine

Pardina white cooking wine

Traded Unit GTIN: 48437016973101 Internal GTIN: 8437016973103 Supplier : Delimport Ltd Suppliers Product Code: CW23

Reference Intake



Nutritional Information

Typical Values	Per 100g
Energy	28kJ 6.7kCal
Carbohydrates	<0.5g
of which sugars	<0.5g
Fat	0g
of which saturates	0g
Fibre	-g
Protein	<0.5g
Salt	0.5g

Allergy Information

Key: Contains May Contain

  
Does Not Contain Cereal/Gluten

  
Does Not Contain Milk

  
Does Not Contain Eggs

  
Does Not Contain Peanuts

  
Does Not Contain Nuts

  
Does Not Contain Crustaceans

  
Does Not Contain Mustard

  
Does Not Contain Fish

  
Does Not Contain Lupin

  
Does Not Contain Sesame

  
Does Not Contain Celery

  
Does Not Contain Soya

  
Does Not Contain Molluscs

  
Contains Sulphur Dioxide

Dietary Information

Key: Suitable for

  
Suitable for Vegetarian

  
Suitable for Vegan

  
May not be suitable for Kosher

  
May not be suitable for Halal

  
NO DATA for Coeliac

Ingredients

Partially de-alcoholised Pardina white wine, water, salt, preservative; E220 (SULPHITES) and E202, antioxidant; E300, aciduland; E353