

Supplier's Product Code :  
Product Added :  
Last Updated by Supplier :  
erudus id :

MIAL80006005  
02 July 2024  
02 July 2024  
5b5c9f938e4b430cb4ce378eef9a20



The information on the Erudus System has been supplied by the manufacturers of the products and, whilst the owners of the Erudus System take steps to ensure the information is regularly updated, they give no warranty and no guarantee that the information is accurate. Product information and ingredients may change, please always read product labels carefully in addition to using the information provided by Erudus One.

We do not accept liability for any inaccuracies or incorrect information contained on this site. Please visit <http://www.erudus.com/terms-and-conditions> for full terms and conditions.

## Alpro Almond for Professionals 12x1ltr

Short Product Name:

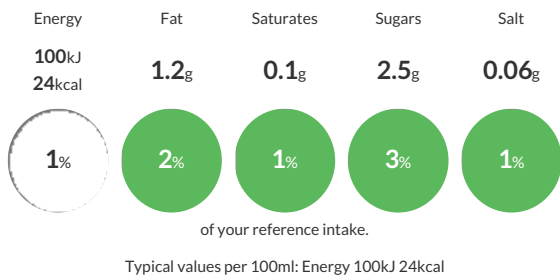
Alpro Almond for Professionals 12x1ltr

Almond milk made for use with coffee machines.

Traded Unit GTIN: - Internal GTIN: 5411188125341 Supplier: Central Supplies Suppliers Product Code: MIAL80006005

### Reference Intake

Each 100ml portion contains:



### Nutritional Information

Typical Values	Per 100ml
Energy	100kJ 24kCal
Carbohydrates	2.6g
of which sugars	2.5g
Fat	1.2g
of which saturates	0.1g
Fibre	0.3g
Protein	0.5g
Salt	0.06g

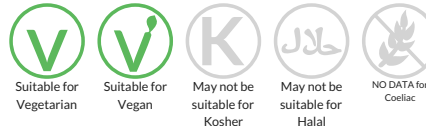
### Allergy Information

Key: Contains May Contain



### Dietary Information

Key: Suitable for



### Ingredients

Water, ALMOND (2.5%), Sugar, Fructose, Acidity regulators (Dipotassium Phosphate, Monopotassium Phosphate), Calcium (Calcium Carbonate), Stabilisers (Gellan Gum, Carrageenan, Guar Gum), Natural Flavourings, Sea Salt.