

Supplier's Product Code :  
Product Added :  
Last Updated by Supplier :  
erudus id :

902959  
04 October 2011  
06 December 2021  
5b764ec4613b4d35b4b9c40cea894a02



The information on the **Erudus System** has been supplied by the manufacturers of the products and, whilst the owners of the Erudus System take steps to ensure the information is regularly updated, they give no warranty and no guarantee that the information is accurate. Product information and ingredients may change, please always read product labels carefully in addition to using the information provided by Erudus One.

We do not accept liability for any inaccuracies or incorrect information contained on this site. Please visit <http://www.erudus.com/terms-and-conditions> for full terms and conditions.

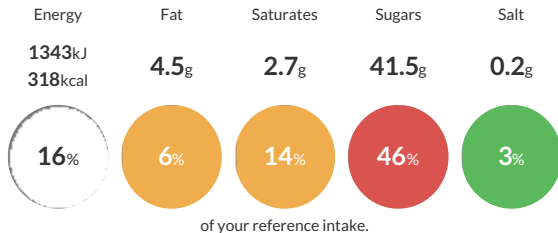
## Matthew Walker Classic Catering Loaf Christmas Pudding 1.25kg

A moist Christmas pudding, with juicy sultanas, cider and rum.

Traded Unit GTIN: **05010744751552** Internal GTIN: **5010744000667** Supplier: **Matthew Walker** Suppliers Product Code: **902959**

### Reference Intake

Each 100g portion contains:



Typical values per 100g : Energy 1343kJ 318kcal

### Nutritional Information

Typical Values	Per 100g
Energy	1343kJ 318kCal
Carbohydrates	64.3g
of which sugars	41.5g
Fat	4.5g
of which saturates	2.7g
Fibre	3.5g
Protein	2.6g
Salt	0.2g

### Allergy Information

Key: **Contains** **May Contain**



#### Allergen Statement

May Contain Nuts

### Ingredients

Sultanas (28%), Sugar, Fortified Wheat Flour (**WHEAT** Flour, Calcium Carbonate, Iron, Niacin (B3), Thiamin (B1)), Cider (9%), Water, Humectant (Glycerine), Palm Oil, Orange and Lemon Peel, Rum, Mixed Spice, Salt, Molasses, Yeast.

Contains Wheat, Gluten.

### Dietary Information

Key: **Suitable for**

