

Supplier's Product Code :
Product Added :
Last Updated by Supplier :
erudus id :

20561475
19 January 2024
19 January 2024
5c29d3e033fc4457b1bd5dced11847ae



The information on the [Erudus System](#) has been supplied by the manufacturers of the products and, whilst the owners of the Erudus System take steps to ensure the information is regularly updated, they give no warranty and no guarantee that the information is accurate. Product information and ingredients may change, please always read product labels carefully in addition to using the information provided by Erudus One.

We do not accept liability for any inaccuracies or incorrect information contained on this site. Please visit <http://www.erudus.com/terms-and-conditions> for full terms and conditions.

DVG SF CARAMEL SYRUP 6x1L

Short Product Name:

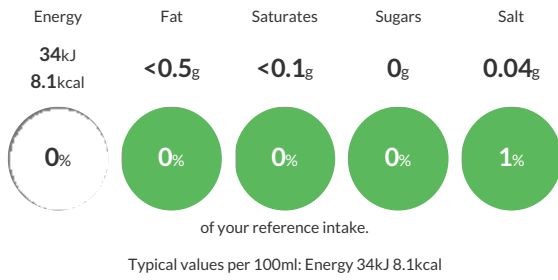
Caramel flavour syrup with sweetener

Caramel Flavour syrup made with water, natural flavourings, sweeteners and preservative

Traded Unit GTIN: **05018010401507** Internal GTIN: **5018010001509** Supplier: **Kerry Ingredients UK Limited** Suppliers Product Code: **20561475**

Reference Intake

Each 100ml portion contains:



Nutritional Information

Typical Values	Per 100ml
Energy	34kJ 8.1kCal
Carbohydrates	1.9g
of which sugars	0g
Fat	<0.5g
of which saturates	<0.1g
Fibre	-g
Protein	0g
Salt	0.04g

Allergy Information

Key: **Contains** **May Contain**



Dietary Information

Key: **Suitable for**



Ingredients

Water, Natural Flavourings*, Stabiliser (Cellulose Gum), Sweeteners (Acesulfame K, Sucralose), Acidity Regulator (Citric Acid), Preservative (Potassium Sorbate), Colour (Plain Caramel).