

Supplier's Product Code :
Product Added :
Last Updated by Supplier :
erudus id :

31018860
29 May 2024
29 May 2024
5c2b71cfdaf242a3a5a4a146e4e3c047



The information on the Erudus System has been supplied by the manufacturers of the products and, whilst the owners of the Erudus System take steps to ensure the information is regularly updated, they give no warranty and no guarantee that the information is accurate. Product information and ingredients may change, please always read product labels carefully in addition to using the information provided by Erudus One.

We do not accept liability for any inaccuracies or incorrect information contained on this site. Please visit <http://www.erudus.com/terms-and-conditions> for full terms and conditions.

Cadbury CaFlake99Cone AN 125ml1x24

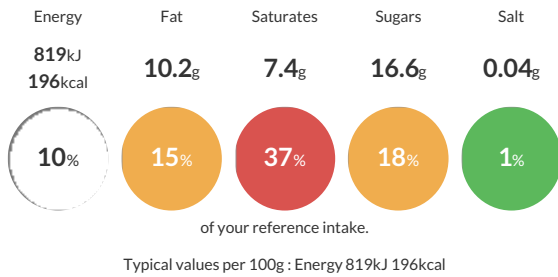
Short Product Name:
Flake Cone

Biscuit cone with chocolate flavour coating filled with vanilla flavour ice cream, milk chocolate flake bar and topped with milk chocolate curls.

Traded Unit GTIN: 5010693381848 Internal GTIN: 5010693411606 Supplier: Fronerl Ice Cream UK Limited Suppliers Product Code: 31018860

Reference Intake

Each 100g portion contains:



Nutritional Information

Typical Values	Per 100g
Energy	819kJ 196kCal
Carbohydrates	23.4g
of which sugars	16.6g
Fat	10.2g
of which saturates	7.4g
Fibre	0.3g
Protein	2.5g
Salt	0.04g

Allergy Information

Key: **Contains** **May Contain**



Dietary Information

Key: **Suitable for**



Ingredients

Partially reconstituted buttermilk, biscuit cone (wheat flour, sugar, coconut oil, emulsifier (soya lecithin)), Cadbury milk chocolate flake bar^ (11%) (milk, sugar, cocoa butter, cocoa mass, vegetable oils (palm, shea), emulsifier (E442), flavourings), glucose syrup, chocolate flavour coating (vegetable oils (coconut, sunflower, in varying proportions), sugar, fat reduced cocoa powder, emulsifier (soya lecithin)), coconut oil, sugar, milk chocolate (1.5%) (milk, sugar, cocoa butter, cocoa mass, palm oil, emulsifiers (E442, E476), flavourings), milk chocolate curls (1.5%) (sugar, cocoa mass, cocoa butter, dried whole milk, dried skimmed milk, emulsifier (soya lecithin), flavouring), dried whey (from milk), emulsifiers (E471, E442), flavourings, stabilisers (E412, E410), colour (carotenes).