

Supplier's Product Code :
Product Added :
Last Updated by Supplier :
erudus id :

LWF20 (63446)
04 May 2012
13 April 2022
5d7918417f644cc7bc5858fe44cfb409



The information on the **Erudus System** has been supplied by the manufacturers of the products and, whilst the owners of the Erudus System take steps to ensure the information is regularly updated, they give no warranty and no guarantee that the information is accurate. Product information and ingredients may change, please always read product labels carefully in addition to using the information provided by Erudus One.

We do not accept liability for any inaccuracies or incorrect information contained on this site. Please visit <http://www.erudus.com/terms-and-conditions> for full terms and conditions.

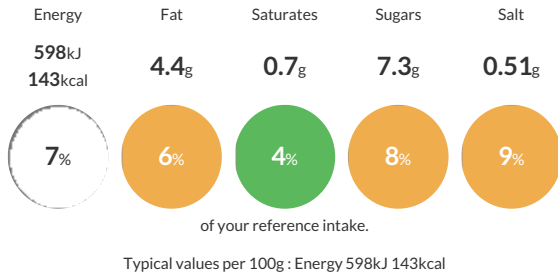
Lamb Weston Sweet Potato Fries 4x2.5Kg

Pre-fried - Deep-frozen seasoned sweet potato product

Traded Unit GTIN: **8711571006095** Internal GTIN: **8711571006088** Supplier: **Lamb Weston Meijer** Suppliers Product Code: **LWF20 (63446)**

Reference Intake

Each 100g portion contains:



Nutritional Information

Typical Values	Per 100g
Energy	598kJ 143kCal
Carbohydrates	25g
of which sugars	7.3g
Fat	4.4g
of which saturates	0.7g
Fibre	2.4g
Protein	0.9g
Salt	0.51g

Allergy Information

Key: **Contains** **May Contain**



Gluten Claim

Gluten content is less than 20ppm.

Ingredients

Sweet Potatoes (84%), Coating (11%) [Modified Starch, Sugar, Rice Flour, Corn Starch, Dextrin, Salt, Raising agents (E450, E500), Colors (E160C, E100), Thickener (E415)], Rapeseed Oil (5%).

Dietary Information

Key: **Suitable for**

