

Supplier's Product Code :  
Product Added :  
Last Updated by Supplier :  
erudus id :

KFC204  
21 October 2013  
04 November 2022  
5f39869d8a6246ba8dbd081c0d77baeb



The information on the Erudus System has been supplied by the manufacturers of the products and, whilst the owners of the Erudus System take steps to ensure the information is regularly updated, they give no warranty and no guarantee that the information is accurate. Product information and ingredients may change, please always read product labels carefully in addition to using the information provided by Erudus One.

We do not accept liability for any inaccuracies or incorrect information contained on this site. Please visit <http://www.erudus.com/terms-and-conditions> for full terms and conditions.

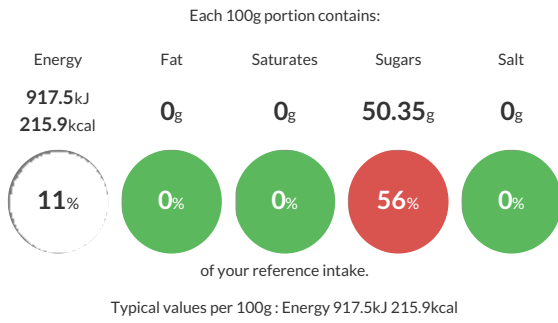
## Wye Strawberry Extra Jam 1.2kg

Short Product Name:  
Strawberry Extra Jam

Wye Strawberry Extra Jam in 1.2kg catering plastic tub

Traded Unit GTIN: - Internal GTIN: Supplier: **The Wooden Spoon Preserving Company** Suppliers Product Code: **KFC204**

### Reference Intake



### Nutritional Information

Typical Values	Per 100g
Energy	917.5kJ 215.9kCal
Carbohydrates	53.6g
of which sugars	50.35g
Fat	0g
of which saturates	0g
Fibre	0.6g
Protein	0.03g
Salt	0g

### Allergy Information

Key: **Contains** **May Contain**



#### Gluten Claim

Gluten content is less than 20ppm.

### Ingredients

Sugar, Strawberries (45%), Gelling Agent: Pectin, Citric Acid.

### Dietary Information

Key: **Suitable for**

