

Supplier's Product Code :  
Product Added :  
Last Updated by Supplier :  
erudus id :

GIBINT90484R4  
27 September 2012  
10 January 2023  
5f798dc63cd34364b6c58818e1622d8e



The information on the [Erudus System](#) has been supplied by the manufacturers of the products and, whilst the owners of the Erudus System take steps to ensure the information is regularly updated, they give no warranty and no guarantee that the information is accurate. Product information and ingredients may change, please always read product labels carefully in addition to using the information provided by Erudus One.

We do not accept liability for any inaccuracies or incorrect information contained on this site. Please visit <http://www.erudus.com/terms-and-conditions> for full terms and conditions.

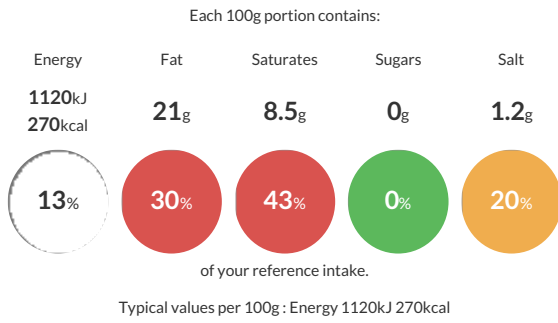
## 48 x 113g Frozen 90% Beef Burger Interleaved

Short Product Name:  
90% Beef Burger

Frozen 90% Beef Burger Interleaved suitable to cook from frozen.

Traded Unit GTIN: **5060385710180** Internal GTIN: Supplier: **Gourmet Island** Suppliers Product Code: **GIBINT90484R4**

### Reference Intake



### Nutritional Information

Typical Values	Per 100g
Energy	1120kJ 270kCal
Carbohydrates	3.4g
of which sugars	0g
Fat	21g
of which saturates	8.5g
Fibre	0.1g
Protein	16.8g
Salt	1.2g

### Allergy Information

Key: **Contains** **May Contain**



### Dietary Information

Key: **Suitable for**



### Ingredients

Beef (90%) (Water, Salt), Potato Starch, Water, Wheat Flour (**WHEAT** Flour, Calcium Carbonate, Iron, Niacin, Thiamin), Salt, Dextrose, Seasoning (Salt, Wheat Flour (**WHEAT** Flour, Calcium Carbonate, Iron, Niacin, Thiamin), Maltodextrin, Yeast Extract, Onion Powder, Black Pepper, White Pepper, Pepper Extract, Flavouring).