

Supplier's Product Code :
 Product Added :
 Last Updated by Supplier :
 erudus id :

BC.W28X2.5
 06 October 2016
 25 November 2021
 5fc911335f0d469cbe33e8b7c05db741



The information on the **Erudus System** has been supplied by the manufacturers of the products and, whilst the owners of the Erudus System take steps to ensure the information is regularly updated, they give no warranty and no guarantee that the information is accurate. Product information and ingredients may change, please always read product labels carefully in addition to using the information provided by Erudus One.

We do not accept liability for any inaccuracies or incorrect information contained on this site. Please visit <http://www.erudus.com/terms-and-conditions> for full terms and conditions.

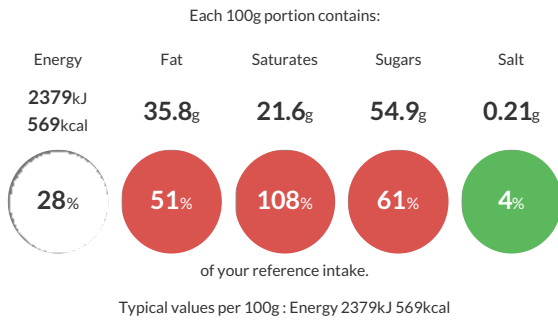
W2-E4-U71 8x2.5kg White Easimelt GGC - Callebaut Chocolate

Short Product Name:
 White Easimelt

Callebaut W2-E4-U71 8x2.5kg White Chocolate Easimelt Callets GGC BC.W28X2.5

Traded Unit GTIN: Internal GTIN: Supplier: HB Ingredients Suppliers Product Code: BC.W28X2.5

Reference Intake



Nutritional Information

Typical Values	Per 100g
Energy	2379kJ 569kCal
Carbohydrates	55.3g
of which sugars	54.9g
Fat	35.8g
of which saturates	21.6g
Fibre	0g
Protein	6g
Salt	0.21g

Allergy Information

Key: Contains May Contain

Does Not Contain Cereal/Gluten	Contains Milk	Does Not Contain Eggs	Does Not Contain Peanuts	Does Not Contain Nuts	Does Not Contain Crustaceans	Does Not Contain Mustard
Does Not Contain Fish	Does Not Contain Lupin	Does Not Contain Sesame	Does Not Contain Celery	Contains Soya	Does Not Contain Molluscs	Does Not Contain Sulphur Dioxide

Dietary Information

Key: Suitable for

Suitable for Vegetarian	May not be suitable for Vegan	Suitable for Kosher	Suitable for Halal	Suitable for Coeliac
-------------------------	-------------------------------	---------------------	--------------------	----------------------

Gluten Claim

Gluten content is less than 20ppm.

Ingredients

Sugar 46.5%, cocoa butter 29.5%, whole MILK powder 23.5%, emulsifier (SOYA lecithin) <1%, natural vanilla flavouring <1%