

Supplier's Product Code :
Product Added :
Last Updated by Supplier :
erudus id :

HF3GGB
30 April 2018
19 September 2023
61b63e65ded640dd8c8703ed9105d954



The information on the Erudus System has been supplied by the manufacturers of the products and, whilst the owners of the Erudus System take steps to ensure the information is regularly updated, they give no warranty and no guarantee that the information is accurate. Product information and ingredients may change, please always read product labels carefully in addition to using the information provided by Erudus One.

We do not accept liability for any inaccuracies or incorrect information contained on this site. Please visit <http://www.erudus.com/terms-and-conditions> for full terms and conditions.

Heartsease Farm Fiery Ginger Beer Sparkling premium presse 330ml glass

Short Product Name:

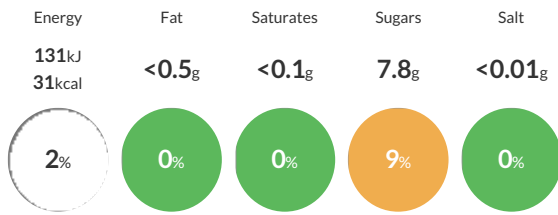
Heartsease Farm Fiery Ginger Beer

The warmth of ginger meets the zing of sun-kissed Sicilian lemons in this fiery ginger beer. Made with 100% natural ingredients and Radnorshire spring water, it blends perfectly with spiced rum and lime for a charismatic cocktail or perfect just over ice. Heartsease Farm tastes beautiful just poured over ice in a tall glass or as a mixer with your favourite spirit. You could always try our 'Muddy Boots,' serve Spiced rum and our Fiery Ginger Beer over ice with a wedge of lime. Heartsease Farm is a working farm and we believe it's our duty to protect the environment we live, work and farm in and that's why we are a proud to be a zero to landfill bottling site.

Traded Unit GTIN: 05026109005512 Internal GTIN: 5026109005505 Supplier: Radnor Hills Mineral Water Company Ltd Suppliers Product Code: HF3GGB

Reference Intake

Each 100ml portion contains:



of your reference intake.

Typical values per 100ml: Energy 131kJ 31kcal

Nutritional Information

Typical Values	Per 100ml
Energy	131kJ 31kCal
Carbohydrates	7.8g
of which sugars	7.8g
Fat	<0.5g
of which saturates	<0.1g
Fibre	-g
Protein	<0.5g
Salt	<0.01g

Allergy Information

Key: Contains May Contain



Dietary Information

Key: Suitable for



Ingredients

Carbonated Spring Water, Sicilian Lemon Juice from Concentrate 10%, Sugar, Lemon Comminute from Concentrate, 1% Flavourings