

Supplier's Product Code :
Product Added :
Last Updated by Supplier :
erudus id :

MSQW022A
02 April 2024
04 July 2024
61c94cf68b744cf0a1f1dbb3c65641ce



The information on the **Erudus System** has been supplied by the manufacturers of the products and, whilst the owners of the Erudus System take steps to ensure the information is regularly updated, they give no warranty and no guarantee that the information is accurate. Product information and ingredients may change, please always read product labels carefully in addition to using the information provided by Erudus One.

We do not accept liability for any inaccuracies or incorrect information contained on this site. Please visit <http://www.erudus.com/terms-and-conditions> for full terms and conditions.

Tom & Basil Quiche 11" (1 x 1)

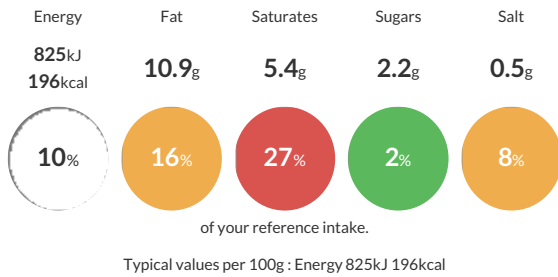
Short Product Name:

11" diameter, whole quiche made with egg, diced tomato, basil and mature Cheddar cheese encased in shortcrust pastry. Approx. 12 ptns per quiche/100g per ptn. Serve hot or thaw and serve cold. Suitable for vegetarians. (1 x 1)

Traded Unit GTIN: **05060062474176** Internal GTIN: Supplier: **Central Foods Group Ltd** Suppliers Product Code: **MSQW022A**

Reference Intake

Each 100g portion contains:



Nutritional Information

Typical Values	Per 100g
Energy	825kJ 196kCal
Carbohydrates	19.8g
of which sugars	2.2g
Fat	10.9g
of which saturates	5.4g
Fibre	0.6g
Protein	5.5g
Salt	0.5g

Allergy Information

Key: **Contains** **May Contain**



Dietary Information

Key: **Suitable for**



Allergen Statement

For allergens, including cereals containing gluten, see ingredients in **CAPITALS**.

Ingredients

Pastry Case: Fortified **WHEAT** Flour (**WHEAT** Flour, Calcium Carbonate, Iron, Niacin, Thiamin), Margarine (Palm Oil, Coconut Oil, Rapeseed Oil, Water, Salt, Emulsifier (Mono- and Diglycerides of Fatty Acids), Acidity Regulators (Citric Acid, Disodium Citrate), Natural Flavouring, Colour (Natural Carotenoids)), Shortening (Palm Oil, Rapeseed Oil), Maize Flour, Water, Tomato Puree, Sea Salt. Filling: Water, Whole Liquid **EGG** (19%), Tomato (11%), Mature White Cheddar Cheese (7%) (**MILK**, Salt, Starter, Rennet, Potato Starch), Whole **MILK** Powder, Modified Maize Starch, Basil (0.3%), **MUSTARD** Powder, Salt, White Pepper. Topping: Tomato (4%), Basil (0.1%).