

Supplier's Product Code :  
Product Added :  
Last Updated by Supplier :  
erudus id :

ECWMGL/1 - SW00073  
25 September 2024  
25 September 2024  
61cf0778c965490ea4fa527becc7d48b



The information on the **Erudus System** has been supplied by the manufacturers of the products and, whilst the owners of the Erudus System take steps to ensure the information is regularly updated, they give no warranty and no guarantee that the information is accurate. Product information and ingredients may change, please always read product labels carefully in addition to using the information provided by Erudus One.

We do not accept liability for any inaccuracies or incorrect information contained on this site. Please visit <http://www.erudus.com/terms-and-conditions> for full terms and conditions.

## Wild Mushroom Glace 600g

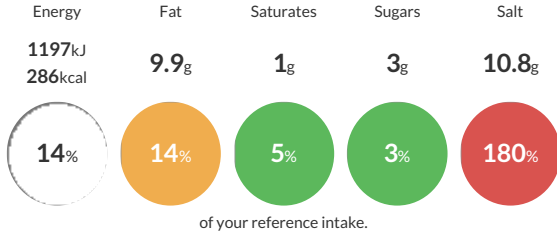
Short Product Name:  
Wild Mushroom Glace

A composite paste, produced by the blending of food ingredients. A dark brown coloured reasonably viscous paste, with a distinctive odour of mushroom. It has the characteristic appearance and flavour of Mushroom Glace when reconstituted with water as directed.

Traded Unit GTIN: **05029540001211** Internal GTIN: **5029540001204** Supplier: **Essential Cuisine Limited** Suppliers Product Code: **ECWMGL/1 - SW00073**

### Reference Intake

Each 100g portion contains:



Typical values per 100g : Energy 1197kJ 286kcal

### Nutritional Information

Typical Values	Per 100g
Energy	1197kJ 286kCal
Carbohydrates	41.8g
of which sugars	3g
Fat	9.9g
of which saturates	1g
Fibre	1.1g
Protein	7.3g
Salt	10.8g

### Allergy Information

Key: **Contains** **May Contain**



#### Gluten Claim

Gluten content is less than 20ppm.

### Ingredients

Ingredients when reconstituted:

Wild Mushroom Stock (Water, Wild Mushroom), Mushroom Juices, Maltodextrin, Salt, Sunflower Oil, Yeast Extracts, Natural Flavouring, Sugar.

### Dietary Information

Key: **Suitable for**

