

Supplier's Product Code :
Product Added :
Last Updated by Supplier :
erudus id :

DCC120
11 April 2024
11 April 2024
6416c327d6494d6fa18363768a7d612e



The information on the Erudus System has been supplied by the manufacturers of the products and, whilst the owners of the Erudus System take steps to ensure the information is regularly updated, they give no warranty and no guarantee that the information is accurate. Product information and ingredients may change, please always read product labels carefully in addition to using the information provided by Erudus One.

We do not accept liability for any inaccuracies or incorrect information contained on this site. Please visit <http://www.erudus.com/terms-and-conditions> for full terms and conditions.

Double Chocolate Chip : 24 x 120ml

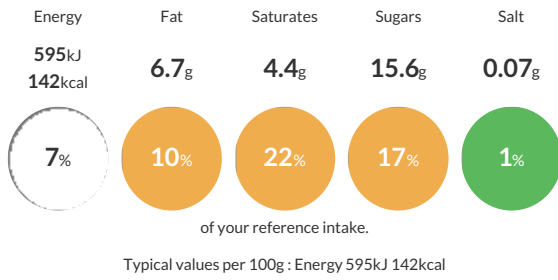
Short Product Name:
Double Chocolate Chip Ice Cream

Double Chocolate Chip Ice Cream - A delicately smooth and rich chocolate Ice Cream with chunky milk chocolate chips.

Traded Unit GTIN: **5060016670975** Internal GTIN: **5060016670166** Supplier: **Yorvale Ltd** Suppliers Product Code: **DCC120**

Reference Intake

Each 100g portion contains:



Nutritional Information

Typical Values	Per 100g
Energy	595kJ 142kCal
Carbohydrates	17.2g
of which sugars	15.6g
Fat	6.7g
of which saturates	4.4g
Fibre	1.4g
Protein	2.7g
Salt	0.07g

Allergy Information

Key: **Contains** **May Contain**



Dietary Information

Key: **Suitable for**



Allergen Statement

This product has been produced in a factory that uses nut ingredients.

Ingredients

whole MILK, sugar, MILK chocolate chips (9%) (sugar, cocoa butter, skimmed MILK powder, cocoa mass, whole MILK powder, whey powder (MILK), anhydrous MILK fat, emulsifier (SOYA), natural vanilla flavouring), double cream (MILK), glucose syrup, cocoa mass, cocoa powder, skimmed MILK powder, emulsifier (mono and diglycerides of fatty acids), stabiliser (guar gum, carrageenan, locust bean gum)