

Supplier's Product Code :  
Product Added :  
Last Updated by Supplier :  
erudus id :

EB107  
19 November 2019  
22 June 2022  
642c22547167468a8308e42508983294



The information on the Erudus System has been supplied by the manufacturers of the products and, whilst the owners of the Erudus System take steps to ensure the information is regularly updated, they give no warranty and no guarantee that the information is accurate. Product information and ingredients may change, please always read product labels carefully in addition to using the information provided by Erudus One.

We do not accept liability for any inaccuracies or incorrect information contained on this site. Please visit <http://www.erudus.com/terms-and-conditions> for full terms and conditions.

## STILTON BEST CROPWELL BISHOP 1/2 4KG

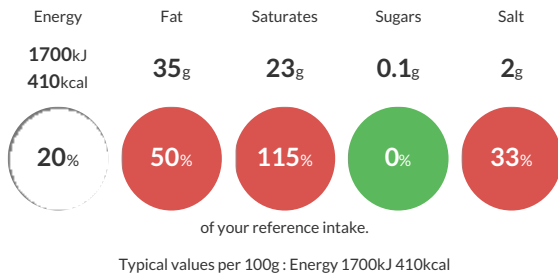
Short Product Name:  
BLUE STILTON CHEESE

Blue Stilton Cheese

Traded Unit GTIN:  Internal GTIN:  Supplier: **Cheese Cellar (H&B Foods)** Suppliers Product Code: **EB107**

### Reference Intake

Each 100g portion contains:



### Nutritional Information

Typical Values	Per 100g
Energy	1700kJ 410kCal
Carbohydrates	0.1g
of which sugars	0.1g
Fat	35g
of which saturates	23g
Fibre	-g
Protein	23.7g
Salt	2g

### Allergy Information

Key: **Contains** **May Contain**



#### Gluten Claim

Gluten content is less than 20ppm.

#### Allergen Statement

MILK

### Ingredients

Pasteurised Cow's MILK, Salt, Microbial Rennet, Starter Culture, Mould Culture

### Dietary Information

Key: **Suitable for**

