

Supplier's Product Code :
Product Added :
Last Updated by Supplier :
erudus id :

10170 - PP270
05 December 2012
27 January 2022
68f1864d1e63452d83579a9cdb83b7c6



The information on the [Erudus System](#) has been supplied by the manufacturers of the products and, whilst the owners of the Erudus System take steps to ensure the information is regularly updated, they give no warranty and no guarantee that the information is accurate. Product information and ingredients may change, please always read product labels carefully in addition to using the information provided by Erudus One.

We do not accept liability for any inaccuracies or incorrect information contained on this site. Please visit <http://www.erudus.com/terms-and-conditions> for full terms and conditions.

20 WHITE BAGUETTES 300g

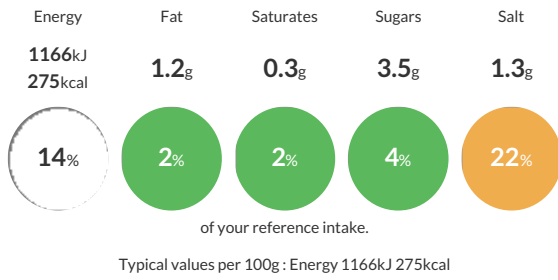
Short Product Name:
WHITE BAGUETTES

Bread with 6 cuts

Traded Unit GTIN: **3516870101701** Internal GTIN: Supplier: **Planète Pain** Suppliers Product Code: **10170 - PP270**

Reference Intake

Each 100g portion contains:



Nutritional Information

Typical Values	Per 100g
Energy	1166kJ 275kCal
Carbohydrates	56.5g
of which sugars	3.5g
Fat	1.2g
of which saturates	0.3g
Fibre	-g
Protein	8.9g
Salt	1.3g

Allergy Information

Key: **Contains** **May Contain**



Dietary Information

Key: **Suitable for**



Ingredients

WHEAT flour, water, yeast, salt, **WHEAT GLUTEN**, flour treatment agent : E300, enzymes, malted **WHEAT** flour.