

Supplier's Product Code :
 Product Added :
 Last Updated by Supplier :
 erudus id :

RIC008
 31 January 2025
 31 January 2025
 693797afb90d4a7cae211e1b2a13848b



The information on the Erudus System has been supplied by the manufacturers of the products and, whilst the owners of the Erudus System take steps to ensure the information is regularly updated, they give no warranty and no guarantee that the information is accurate. Product information and ingredients may change, please always read product labels carefully in addition to using the information provided by Erudus One.

We do not accept liability for any inaccuracies or incorrect information contained on this site. Please visit <http://www.erudus.com/terms-and-conditions> for full terms and conditions.

Pearled Spelt Grain 1kg

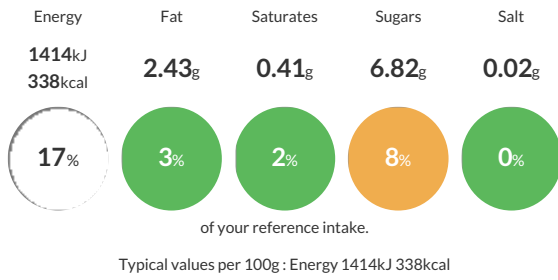
Short Product Name:
 Spelt Grain

Pearled Spelt Grain (Triticum dicoccum or spelta).

Traded Unit GTIN: 5060103915644 Internal GTIN: 5060103915637 Supplier: Centaur Foods Ltd Suppliers Product Code: RIC008

Reference Intake

Each 100g portion contains:



Nutritional Information

Typical Values	Per 100g
Energy	1414kJ 338kCal
Carbohydrates	70.79g
of which sugars	6.82g
Fat	2.43g
of which saturates	0.41g
Fibre	10.7g
Protein	14.57g
Salt	0.02g

Allergy Information

Key: Contains May Contain

Contains Cereal/Gluten	Does Not Contain Milk	Does Not Contain Eggs	Does Not Contain Peanuts	Does Not Contain Nuts	Does Not Contain Crustaceans	May Contain Mustard
Does Not Contain Fish	Does Not Contain Lupin	May Contain Sesame	May Contain Celery	May Contain Soya	Does Not Contain Molluscs	May Contain Sulphur Dioxide

Allergen Statement
 Product contains SPELT.

Ingredients

Spelt Grain 100%

Dietary Information

Key: Suitable for

Suitable for Vegetarian	Suitable for Vegan	May not be suitable for Kosher	May not be suitable for Halal	NO DATA for Coeliac
-------------------------	--------------------	--------------------------------	-------------------------------	---------------------