

Supplier's Product Code :  
 Product Added :  
 Last Updated by Supplier :  
 erudus id :

5139279000  
 18 October 2024  
 18 October 2024  
 697ed8657ea8454599d619d30112bd6e



The information on the **Erudus System** has been supplied by the manufacturers of the products and, whilst the owners of the Erudus System take steps to ensure the information is regularly updated, they give no warranty and no guarantee that the information is accurate. Product information and ingredients may change, please always read product labels carefully in addition to using the information provided by Erudus One.

We do not accept liability for any inaccuracies or incorrect information contained on this site. Please visit <http://www.erudus.com/terms-and-conditions> for full terms and conditions.

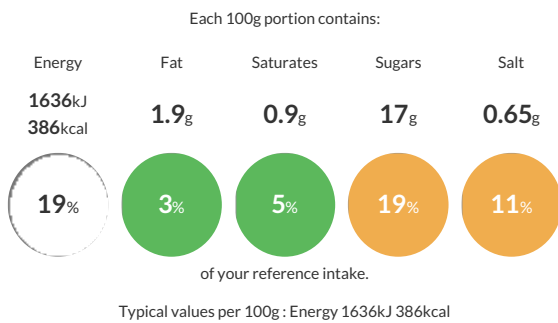
## Kellogg's Coco Pops 40x35g Portion Pack

Short Product Name:  
 Coco Pops Cereal

Treat the family to the irresistibly chocolatey taste of Kellogg's Coco Pops breakfast cereal. Our delicious Kellogg's Coco Pops are now has 30% less sugar\* but still maintain the same chocolatey taste you know and love. Kellogg's Coco Pops meets 50% of your vitamin D needs\*\* which contributes to the maintenance of normal bones. Each bowl of Kellogg's Coco Pops is enriched with 8 essential vitamins & minerals including B vitamins, iron and folic acid, and best of all no artificial colours or sweeteners so you can rest assured you and your family are getting only the best ingredients in your cereal. \*30% less sugar on average than other chocolate flavoured toasted rice cereals. IRI UK 2020 \*\*Contains  $\geq$  15% RI vitamin D which contributes to the maintenance of normal bones. \*Please always check the label of the pack you receive as there may be differences from the information you read on site due to stock changeover

Traded Unit GTIN: **5050083392795** Internal GTIN: **5050083392801** Supplier : **Kellanova (previously Kellogg's)** Suppliers Product Code : **5139279000**

### Reference Intake



### Nutritional Information

Typical Values	Per 100g
Energy	1636kJ 386kCal
Carbohydrates	84g
of which sugars	17g
Fat	1.9g
of which saturates	0.9g
Fibre	3.8g
Protein	6.3g
Salt	0.65g

### Allergy Information

Key: **Contains** **May Contain**

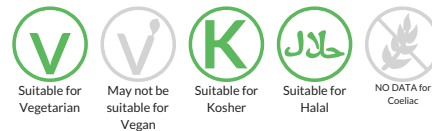


#### Allergen Statement

Contains Allergens - **BARLEY**  
 May contains allergens - **GLUTEN FROM OTHER CEREALS, MILK**

### Dietary Information

Key: **Suitable for**



### Ingredients

Rice, sugar, glucose syrup, fat reduced cocoa powder, salt, cocoa mass, **BARLEY** malt extract, flavourings **VITAMINS & MINERALS**: Niacin, iron, vitamin B6, riboflavin, thiamin, folic acid, vitamin D, vitamin B12.