

Supplier's Product Code :
 Product Added :
 Last Updated by Supplier :
 erudus id :

SW00663 - ECBGM/11
 20 May 2024
 20 May 2024
 698ff2aeb494618b2673bbd8a86c59e



The information on the Erudus System has been supplied by the manufacturers of the products and, whilst the owners of the Erudus System take steps to ensure the information is regularly updated, they give no warranty and no guarantee that the information is accurate. Product information and ingredients may change, please always read product labels carefully in addition to using the information provided by Erudus One.

We do not accept liability for any inaccuracies or incorrect information contained on this site. Please visit <http://www.erudus.com/terms-and-conditions> for full terms and conditions.

No1 Beef Gravy Mix 1.5kg

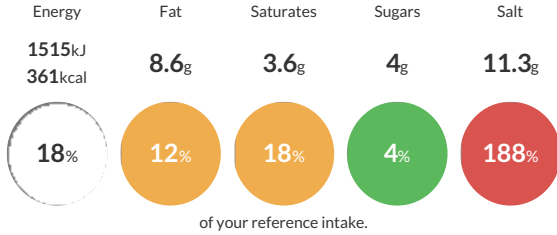
Short Product Name:
 Beef Gravy Mix

A composite material produced by the dry blending of food ingredients. A fine, light greyish-brown coloured, free-flowing powder with a distinctive odour of beef. It has the characteristic appearance and flavour of beef gravy when reconstituted with water.

Traded Unit GTIN: 05029540000726 Internal GTIN: 5029540000573 Supplier: Essential Cuisine Limited Suppliers Product Code: SW00663 - ECBGM/11

Reference Intake

Each 100g portion contains:



Typical values per 100g : Energy 1515kJ 361kcal

Nutritional Information

Typical Values	Per 100g
Energy	1515kJ 361kCal
Carbohydrates	65.3g
of which sugars	4g
Fat	8.6g
of which saturates	3.6g
Fibre	0.3g
Protein	5.6g
Salt	11.3g

Allergy Information

Key: Contains May Contain

Does Not Contain Cereal/Gluten	Does Not Contain Milk	Does Not Contain Eggs	Does Not Contain Peanuts	Does Not Contain Nuts	Does Not Contain Crustaceans	Does Not Contain Mustard	
Does Not Contain Fish	Does Not Contain Lupin	Does Not Contain Sesame	Does Not Contain Celery	Does Not Contain Soya	Does Not Contain Molluscs	Does Not Contain Sulphur Dioxide	

Gluten Claim

Gluten content is less than 20ppm.

Allergen Statement

N/A

Ingredients

Ingredients when reconstituted:

Beef Stock (Water, Beef Stock, Beef Dripping), Modified Tapioca Starch, Flavourings, Salt, Glucose Syrup, Sugar, Rice Flour, Colour (Caramel), Potato Starch, Cornflour, Rapeseed Oil, Maltodextrin, Yeast Extracts, Herb.

Dietary Information

Key: Suitable for

May not be suitable for Vegetarian	May not be suitable for Vegan	May not be suitable for Kosher	May not be suitable for Halal	Suitable for Coeliac