

Supplier's Product Code :  
Product Added :  
Last Updated by Supplier :  
erudus id :

19620  
06 October 2021  
21 September 2023  
6a7c70526f9f44c9bb9d09b79e752690



The information on the **Erudus System** has been supplied by the manufacturers of the products and, whilst the owners of the Erudus System take steps to ensure the information is regularly updated, they give no warranty and no guarantee that the information is accurate. Product information and ingredients may change, please always read product labels carefully in addition to using the information provided by Erudus One.

We do not accept liability for any inaccuracies or incorrect information contained on this site. Please visit <http://www.erudus.com/terms-and-conditions> for full terms and conditions.

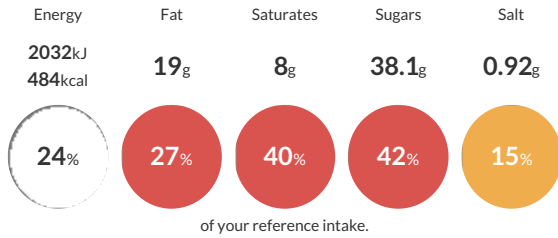
## Lotus Biscoff Crumb 8 x 750g

Crushed Lotus Biscoff biscuit pieces

Traded Unit GTIN: - Internal GTIN: 5410126186208 Supplier: Lotus Bakeries UK Ltd Suppliers Product Code: 19620

### Reference Intake

Each 100g portion contains:



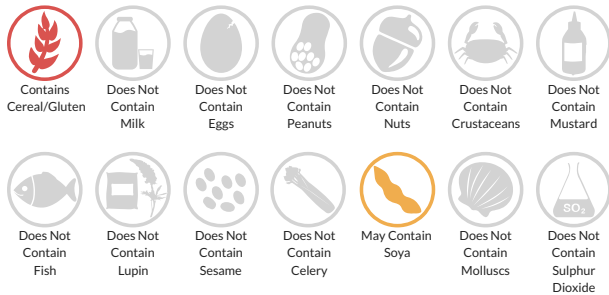
Typical values per 100g : Energy 2032kJ 484kcal

### Nutritional Information

Typical Values	Per 100g
Energy	2032kJ 484kCal
Carbohydrates	72.6g
of which sugars	38.1g
Fat	19g
of which saturates	8g
Fibre	1.3g
Protein	4.9g
Salt	0.92g

### Allergy Information

Key: **Contains** **May Contain**



### Dietary Information

Key: **Suitable for**



### Ingredients

WHEAT flour, sugar, vegetable oils (palm\*, rapeseed), candy sugar syrup, raising agent (sodium hydrogen carbonate), salt, cinnamon. \*from sustainable & certified plantations