

Supplier's Product Code :
Product Added :
Last Updated by Supplier :
erudus id :

G006ST25CC
07 October 2024
07 October 2024
6b290e4e5bc745d08c098ca6e2ec44a0



The information on the Erudus System has been supplied by the manufacturers of the products and, whilst the owners of the Erudus System take steps to ensure the information is regularly updated, they give no warranty and no guarantee that the information is accurate. Product information and ingredients may change, please always read product labels carefully in addition to using the information provided by Erudus One.

We do not accept liability for any inaccuracies or incorrect information contained on this site. Please visit <http://www.erudus.com/terms-and-conditions> for full terms and conditions.

Galaxy Instant Hot Chocolate 50 x 25g

Short Product Name:

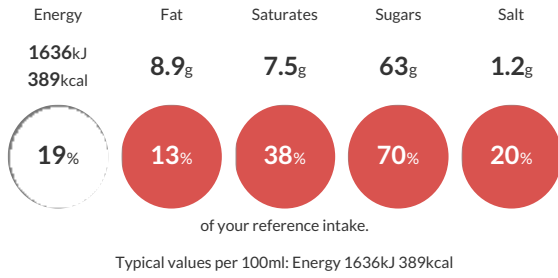
Cocoa powder drink with milk chocolate, sugars and sweeteners

Instant hot chocolate drink.

Traded Unit GTIN: 05060113912732 Internal GTIN: 5060113912701 Supplier: Aimia Foods Ltd Suppliers Product Code: G006ST25CC

Reference Intake

Each 100ml portion contains:



Nutritional Information

Typical Values	Per 100ml
Energy	1636kJ 389kCal
Carbohydrates	70g
of which sugars	63g
Fat	8.9g
of which saturates	7.5g
Fibre	4.3g
Protein	5g
Salt	1.2g

Allergy Information

Key: Contains May Contain



Dietary Information

Key: Suitable for



Ingredients

Whey Permeate (MILK), Sugar, Fat Reduced Cocoa Powder (10%), Coconut Oil, Glucose Syrup, Lactose (MILK), Milk Chocolate (3.0%) (sugar, cocoa butter, skimmed MILK powder, cocoa mass, lactose and protein from whey (MILK), palm fat, whey powder (MILK), milk fat, emulsifier (SOYA lecithin), vanilla extract), Skimmed MILK Powder, Flavourings, Stabilisers (E412, E466, E340ii, E339ii, E452i), Anti-Caking Agent (E551), Sea Salt, Potassium Chloride, MILK Proteins, Magnesium Sulphate, Emulsifier (E471), Sweetener (E955).