

Supplier's Product Code :  
Product Added :  
Last Updated by Supplier :  
erudus id :

PLM1101  
29 October 2024  
29 October 2024  
6c55913f87814b0b9d33daa7cdea1e21



The information on the Erudus System has been supplied by the manufacturers of the products and, whilst the owners of the Erudus System take steps to ensure the information is regularly updated, they give no warranty and no guarantee that the information is accurate. Product information and ingredients may change, please always read product labels carefully in addition to using the information provided by Erudus One.

We do not accept liability for any inaccuracies or incorrect information contained on this site. Please visit <http://www.erudus.com/terms-and-conditions> for full terms and conditions.

## Caterers Pride Plum Halves in Light Syrup 6 x 2500g

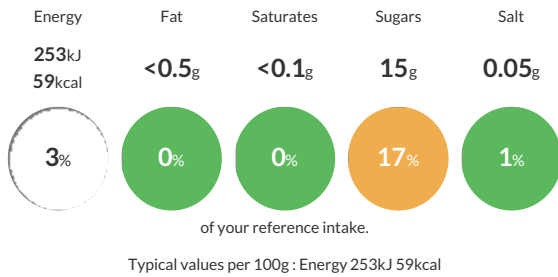
Short Product Name:  
Plum Halves in Light Syrup

Caterers Pride Plum Halves in Light Syrup 6 x 2500g

Traded Unit GTIN: 05057691002603 Internal GTIN: 5057691002597 Supplier: Caterers Choice Ltd Suppliers Product Code: PLM1101

### Reference Intake

Each 100g portion contains:



### Nutritional Information

Typical Values	Per 100g
Energy	253kJ 59kCal
Carbohydrates	15g
of which sugars	15g
Fat	<0.5g
of which saturates	<0.1g
Fibre	0.8g
Protein	0.3g
Salt	0.05g

### Allergy Information

Key: Contains May Contain



### Dietary Information

Key: Suitable for



### Ingredients

Plum Halves, Water, Sugar, Acidity Regulator (Citric Acid)