

Supplier's Product Code :  
Product Added :  
Last Updated by Supplier :  
erudus id :

412941  
14 November 2019  
19 April 2022  
6c92c8736b7b46d3b3eb275f861b9fe6



The information on the Erudus System has been supplied by the manufacturers of the products and, whilst the owners of the Erudus System take steps to ensure the information is regularly updated, they give no warranty and no guarantee that the information is accurate. Product information and ingredients may change, please always read product labels carefully in addition to using the information provided by Erudus One.

We do not accept liability for any inaccuracies or incorrect information contained on this site. Please visit <http://www.erudus.com/terms-and-conditions> for full terms and conditions.

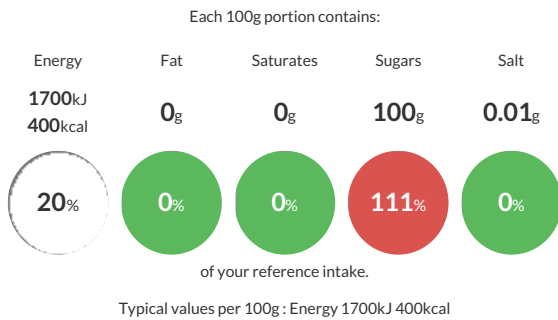
## CASTER SUGAR 10X1KG

Short Product Name:  
CASTER SUGAR

A fine white free flowing crystalline sugar that is produced to a tight colour specification with a consistent crystal size. Meets BP, EP & USP Standards, but it is not certified. Caster Sugar adds sweetness and texture without any other colour or flavour. It is the most commonly used sugar in professional kitchens for baking to produce fine, close textured products. In dry mixes, it disperses more evenly and with less stratification than larger-grained white sugars. Quick dissolving.

Traded Unit GTIN: 05010115129416 Internal GTIN: 5010115822331 Supplier: Tate & Lyle Sugars Suppliers Product Code: 412941

### Reference Intake



### Nutritional Information

Typical Values	Per 100g
Energy	1700kJ 400kCal
Carbohydrates	100g
of which sugars	100g
Fat	0g
of which saturates	0g
Fibre	-g
Protein	0g
Salt	0.01g

### Allergy Information

Key: Contains May Contain



### Dietary Information

Key: Suitable for



### Allergen Statement

Allergen Status: This product is Allergen free as defined by European Commission Directives 2000/13/EC, 2007/68/EC and European Commission Regulation 2009/41/EC (Gluten ≤ 20ppm).

### Ingredients

white sugar, or sugar (100%)