

Supplier's Product Code :
Product Added :
Last Updated by Supplier :
erudus id :

968169
02 August 2024
02 August 2024
6c92d9c33fb6401ca82bcd9c46b31c4e



The information on the Erudus System has been supplied by the manufacturers of the products and, whilst the owners of the Erudus System take steps to ensure the information is regularly updated, they give no warranty and no guarantee that the information is accurate. Product information and ingredients may change, please always read product labels carefully in addition to using the information provided by Erudus One.

We do not accept liability for any inaccuracies or incorrect information contained on this site. Please visit <http://www.erudus.com/terms-and-conditions> for full terms and conditions.

CADBURY DAIRY MILK CHOCOLATE BAR 48CA

Warning! This Product Specification complies with EU Food Information Regulation No. 1169/2011 (FIR) however we are still awaiting further product attributes to complete the full Erudus specification.

Short Product Name:

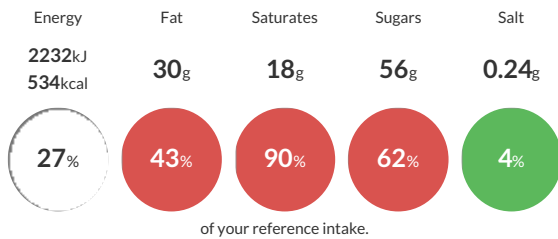
CADBURY DAIRY MILK CHOCOLATE BAR

CADBURY DAIRY MILK CHOCOLATE BAR

Traded Unit GTIN: **07622300743529** Internal GTIN: **07622300743536** Supplier : **Mondelez UK Ltd** Suppliers Product Code : **968169**

Reference Intake

Each 100g portion contains:



Typical values per 100g : Energy 2232kJ 534kcal

Nutritional Information

Typical Values	Per 100g
Energy	2232kJ 534kCal
Carbohydrates	57g
of which sugars	56g
Fat	30g
of which saturates	18g
Fibre	2.1g
Protein	7.3g
Salt	0.24g

Allergy Information

Key: **Contains** **May Contain**



Allergen Statement

MAY CONTAIN NUTS, WHEAT.

Ingredients

MILK**, Sugar, Cocoa butter, Cocoa mass, Vegetable fat (palm, shea), Emulsifiers (E442, E476), Flavourings.

Dietary Information

Key: **Suitable for**

