

Supplier's Product Code :
Product Added :
Last Updated by Supplier :
erudus id :

WLC7656
08 December 2021
04 July 2024
6cef722c414b4398bf1659b600277ce0



The information on the Erudus System has been supplied by the manufacturers of the products and, whilst the owners of the Erudus System take steps to ensure the information is regularly updated, they give no warranty and no guarantee that the information is accurate. Product information and ingredients may change, please always read product labels carefully in addition to using the information provided by Erudus One.

We do not accept liability for any inaccuracies or incorrect information contained on this site. Please visit <http://www.erudus.com/terms-and-conditions> for full terms and conditions.

GF Choc & Salted Caramel Tart (1 x 12)

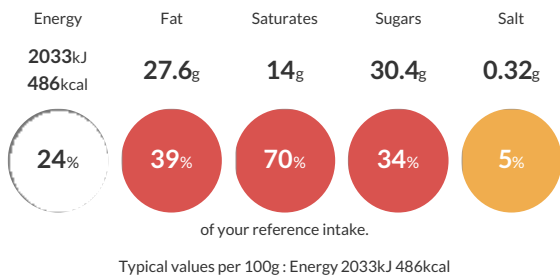
Short Product Name:

Individually wrapped. Chocolate pastry case filled with a layer of salted caramel and chocolate ganache, finished with nibbed hazelnuts. May also be used as a plated dessert. Wheat, gluten and milk-free. Suitable for vegetarians, vegans and coeliacs. Defrosted shelf-life = 28 days. (1 x 12)

Traded Unit GTIN: 05028931176569 Internal GTIN: 5028931076562 Supplier: Central Foods Group Ltd Suppliers Product Code: WLC7656

Reference Intake

Each 100g portion contains:



Nutritional Information

Typical Values	Per 100g
Energy	2033kJ 486kCal
Carbohydrates	54.7g
of which sugars	30.4g
Fat	27.6g
of which saturates	14g
Fibre	3.1g
Protein	3.2g
Salt	0.32g

Allergy Information

Key: **Contains** **May Contain**



Gluten Claim

Gluten content is less than 20ppm.

Allergen Statement

For allergens, see ingredients in CAPITALS.

Ingredients

Chocolate Ganache (30%) (Sugar, Cocoa Mass, Coconut Milk, Glucose Syrup, Cocoa Butter, Water Palm Oil, Rapeseed Oil, Rice Syrup, Dextrin, Fructose, Emulsifiers (E471, E322, E473), Dextrose, Cornflour, Flavouring, Humectant (Glycerine), Rice Starch, Acidity Regulator, (E330)), Caramel (25%) (Golden Syrup, Cocoa Butter, Sugar, Rice Syrup, Rice Starch, Rice Flour, Flavouring, Salt, Colour (E150a)), Rice Flour, Tapioca Starch, Palm Oil, Oligofructose, Water, Rapeseed Oil, Sugar, Fat Reduced Cocoa Butter, Ground ALMONDS, HAZELNUTS (1%), Salt, Thickener (E415), Emulsifier (E471).

Dietary Information

Key: **Suitable for**

