

Supplier's Product Code :
Product Added :
Last Updated by Supplier :
erudus id :

5110156000
25 November 2024
25 November 2024
6d7dbf2408c4458da1d9a7276c8cd894



The information on the **Erudus System** has been supplied by the manufacturers of the products and, whilst the owners of the Erudus System take steps to ensure the information is regularly updated, they give no warranty and no guarantee that the information is accurate. Product information and ingredients may change, please always read product labels carefully in addition to using the information provided by Erudus One.

We do not accept liability for any inaccuracies or incorrect information contained on this site. Please visit <http://www.erudus.com/terms-and-conditions> for full terms and conditions.

Kellogg's Special K Original Cereal Portion Pack 40 x 30g

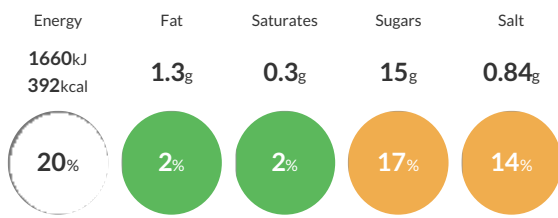
Short Product Name:
Special K Original Cereal

Start your morning with a tasty and nourishing bowl of Kellogg's Special K Original breakfast cereal. A deliciously crunchy combination of multigrain flakes of rice, wholewheat and barley. With a source of fibre, it's made with 38% wholegrain and, rest assured, there are no artificial colours or preservatives. Enjoy a delicious and satisfying breakfast to kickstart your day – unleash your potential and live life at full strength. Everything we're made of powers everything you're made of – #poweringyou. *A serving of Special K cereal contains $\geq 15\%$ RI vitamin B3 which contributes to normal energy-yielding metabolism. Enjoy as part of a balanced diet & healthy lifestyle.

Traded Unit GTIN: **5053827101561** Internal GTIN: **5053827101554** Supplier : **Kellanova (Kellogg's)** Suppliers Product Code : **5110156000**

Reference Intake

Each 100g portion contains:



of your reference intake.

Typical values per 100g : Energy 1660kJ 392kcal

Nutritional Information

Typical Values	Per 100g
Energy	1660kJ 392kCal
Carbohydrates	84g
of which sugars	15g
Fat	1.3g
of which saturates	0.3g
Fibre	6g
Protein	8g
Salt	0.84g

Allergy Information

Key: **Contains** **May Contain**



Dietary Information

Key: **Suitable for**



Ingredients

Rice (47%), **WHOLEWHEAT** (37%), sugar, **BARLEY** (5%), malted **BARLEY** flour, salt, **BARLEY** malt extract, niacin, iron, zinc, riboflavin, thiamin, vitamin B6, folic acid, vitamin D, vitamin B12.