

Supplier's Product Code :
Product Added :
Last Updated by Supplier :
erudus id :

BCNA12
09 April 2024
09 April 2024
6e3c9b54a778415b844f8eec074f44ef



The information on the [Erudus System](#) has been supplied by the manufacturers of the products and, whilst the owners of the Erudus System take steps to ensure the information is regularly updated, they give no warranty and no guarantee that the information is accurate. Product information and ingredients may change, please always read product labels carefully in addition to using the information provided by Erudus One.

We do not accept liability for any inaccuracies or incorrect information contained on this site. Please visit <http://www.erudus.com/terms-and-conditions> for full terms and conditions.

CLASSIC WHITE BREADCRUMBS 4x3kg

Short Product Name:

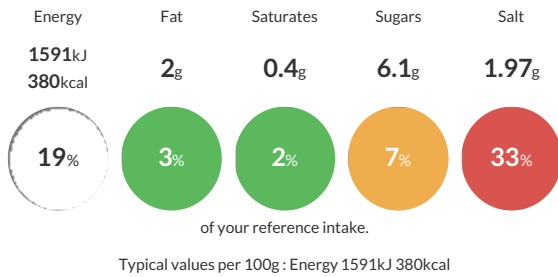
CLASSIC WHITE BREADCRUMBS 4x3kg

A dried, off-white breadcrumb with characteristic baked cereal flavour. Free from foreign materials and carbonised particles.

Traded Unit GTIN: **5020933117144** Internal GTIN: **5020933110671** Supplier: **Sleaford Quality Foods** Suppliers Product Code: **BCNA12**

Reference Intake

Each 100g portion contains:



Nutritional Information

Typical Values	Per 100g
Energy	1591kJ 380kCal
Carbohydrates	85g
of which sugars	6.1g
Fat	2g
of which saturates	0.4g
Fibre	4g
Protein	13g
Salt	1.97g

Allergy Information

Key: **Contains** **May Contain**



Dietary Information

Key: **Suitable for**



Ingredients

WHEAT Flour (WHEAT Flour, Calcium Carbonate, Iron, Niacin, Thiamine), Water, Salt, Yeast