

Supplier's Product Code :
Product Added :
Last Updated by Supplier :
erudus id :

20304431
21 August 2014
15 August 2022
6eb7f44acf294962af80e967a8f547b4



The information on the **Erudus System** has been supplied by the manufacturers of the products and, whilst the owners of the Erudus System take steps to ensure the information is regularly updated, they give no warranty and no guarantee that the information is accurate. Product information and ingredients may change, please always read product labels carefully in addition to using the information provided by Erudus One.

We do not accept liability for any inaccuracies or incorrect information contained on this site. Please visit <http://www.erudus.com/terms-and-conditions> for full terms and conditions.

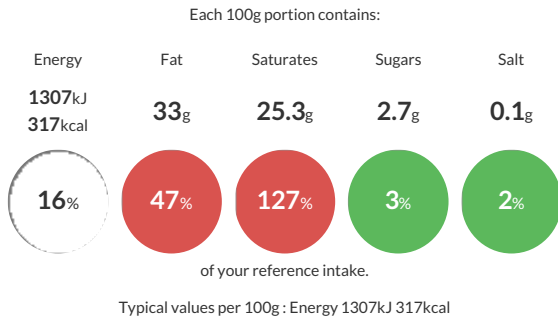
Kerrymaid Double Cream alternative 12 x 1ltr

Short Product Name:

Ultra heat-treated Whipping cream alternative ideal for pouring, cooking and whipping. The product is aseptically packed into 1L cartons

Traded Unit GTIN: **05057624489730** Internal GTIN: **5011069166885** Supplier: **Kerry Ingredients UK Limited** Suppliers Product Code : **20304431**

Reference Intake



Nutritional Information

Typical Values	Per 100g
Energy	1307kJ 317kCal
Carbohydrates	3.5g
of which sugars	2.7g
Fat	33g
of which saturates	25.3g
Fibre	0.1g
Protein	2g
Salt	0.1g

Allergy Information

Key: **Contains** **May Contain**



Gluten Claim

Gluten content is less than 20ppm.

Allergen Statement

For allergens please see ingredients in **CAPITALS**

Ingredients

Reconstituted Skimmed **MILK** Powder, Palm Kernel Oil, Water, Palm Oil, Modified Maize Starch, Flavourings (contain **MILK**), Emulsifiers (E471, E322, E435), **MILK** Protein, Thickener (E415), Acidity Regulator (E331, E340), Salt, Colour (E160a).

Dietary Information

Key: **Suitable for**

