

Supplier's Product Code :
Product Added :
Last Updated by Supplier :
erudus id :

SSS
20 November 2014
18 August 2022
6ec402a0cc214217b99f48ded91eb2b9



The information on the Erudus System has been supplied by the manufacturers of the products and, whilst the owners of the Erudus System take steps to ensure the information is regularly updated, they give no warranty and no guarantee that the information is accurate. Product information and ingredients may change, please always read product labels carefully in addition to using the information provided by Erudus One.

We do not accept liability for any inaccuracies or incorrect information contained on this site. Please visit <http://www.erudus.com/terms-and-conditions> for full terms and conditions.

Smoked Salmon Long sliced

Short Product Name:

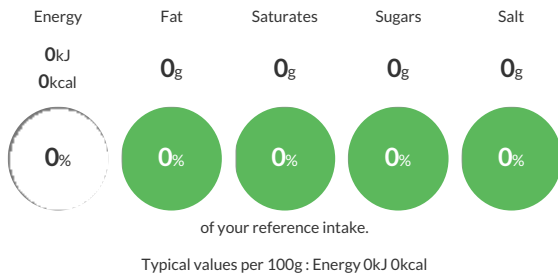
Smoked Salmon Long sliced

Salmon cold smoked and then sliced and laid back on the skin.

Traded Unit GTIN: Internal GTIN: Supplier: The Weald Smokery Suppliers Product Code: SSS

Reference Intake

Each 100g portion contains:



Nutritional Information

Typical Values	Per 100g
Energy	0kJ 0kCal
Carbohydrates	0g
of which sugars	0g
Fat	0g
of which saturates	0g
Fibre	-g
Protein	0g
Salt	0g

Allergy Information

Key: Contains May Contain



Dietary Information

Key: Suitable for



Ingredients

SALMON, salt