

Supplier's Product Code :
Product Added :
Last Updated by Supplier :
erudus id :

10748 - PPT250
17 June 2024
18 June 2024
6f8368250239449ab48896d5039170c7



The information on the Erudus System has been supplied by the manufacturers of the products and, whilst the owners of the Erudus System take steps to ensure the information is regularly updated, they give no warranty and no guarantee that the information is accurate. Product information and ingredients may change, please always read product labels carefully in addition to using the information provided by Erudus One.

We do not accept liability for any inaccuracies or incorrect information contained on this site. Please visit <http://www.erudus.com/terms-and-conditions> for full terms and conditions.

27 BAGUETTES TRADITION 280G

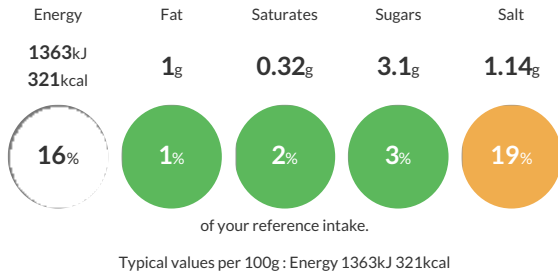
Short Product Name:
BAGUETTE TRADITION

Baguette with 3 cuts

Traded Unit GTIN: 3516870107482 Internal GTIN: 3516870107482 Supplier: Planete Pain Suppliers Product Code: 10748 - PPT250

Reference Intake

Each 100g portion contains:



Nutritional Information

Typical Values	Per 100g
Energy	1363kJ 321kCal
Carbohydrates	66.2g
of which sugars	3.1g
Fat	1g
of which saturates	0.32g
Fibre	3.6g
Protein	8.4g
Salt	1.14g

Allergy Information

Key: Contains May Contain



Dietary Information

Key: Suitable for



Ingredients

WHEAT flour, water, salt, yeast, WHEAT semolina, dehydrated devitalized sourdough WHEAT germs, WHEAT GLUTEN.