

Supplier's Product Code :
 Product Added :
 Last Updated by Supplier :
 erudus id :

12455583
 27 February 2025
 27 February 2025
 706aa576f1824193a92311a8e8655041



The information on the **Erudus System** has been supplied by the manufacturers of the products and, whilst the owners of the Erudus System take steps to ensure the information is regularly updated, they give no warranty and no guarantee that the information is accurate. Product information and ingredients may change, please always read product labels carefully in addition to using the information provided by Erudus One.

We do not accept liability for any inaccuracies or incorrect information contained on this site. Please visit <http://www.erudus.com/terms-and-conditions> for full terms and conditions.

KIT KAT 4 Finger Milk 24x41.5g

Short Product Name:

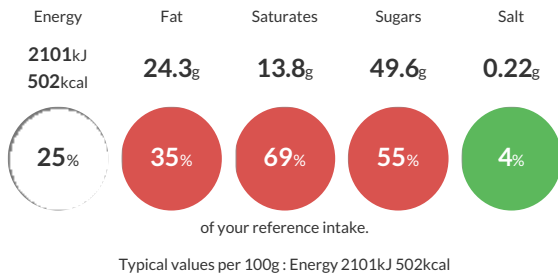
Kit Kat 4 Finger Milk Chocolate Bar 41.5g

Four crispy wafer fingers covered with milk chocolate (66%).

Traded Unit GTIN: **7613036246750** Internal GTIN: **7613035220065** Supplier: **Nestle UK** Suppliers Product Code: **12455583**

Reference Intake

Each 100g portion contains:



Nutritional Information

Typical Values	Per 100g
Energy	2101kJ 502kCal
Carbohydrates	62.5g
of which sugars	49.6g
Fat	24.3g
of which saturates	13.8g
Fibre	2.3g
Protein	6.9g
Salt	0.22g

Allergy Information

Key: **Contains** **May Contain**

Contains Cereal/Gluten	Contains Milk	Does Not Contain Eggs	Does Not Contain Peanuts	Does Not Contain Nuts	Does Not Contain Crustaceans	Does Not Contain Mustard
Does Not Contain Fish	Does Not Contain Lupin	Does Not Contain Sesame	Does Not Contain Celery	Does Not Contain Soya	Does Not Contain Molluscs	Does Not Contain Sulphur Dioxide

Dietary Information

Key: **Suitable for**

Suitable for Vegetarian	May not be suitable for Vegan	May not be suitable for Kosher	May not be suitable for Halal	NO DATA for Coeliac
-------------------------	-------------------------------	--------------------------------	-------------------------------	---------------------

Ingredients

Sugar, **WHEAT** Flour (contains Calcium, Iron, Thiamin and Niacin), Whole **MILK** Powder, Cocoa Mass, Cocoa Butter, Vegetable Fats (Palm, Shea, Palm Kernel, Sal), Whey Powder Product (**MILK**), Skimmed **MILK** Powder, Emulsifier (Lecithins), Yeast, Raising Agent (Sodium Bicarbonate), Glucose Syrup, Butterfat (**MILK**), Whey Powder (**MILK**), Natural Flavourings