

Supplier's Product Code :  
Product Added :  
Last Updated by Supplier :  
erudus id :

410277  
02 February 2015  
19 April 2022  
730c26b4971549c8a62508fbadf2e528



The information on the Erudus System has been supplied by the manufacturers of the products and, whilst the owners of the Erudus System take steps to ensure the information is regularly updated, they give no warranty and no guarantee that the information is accurate. Product information and ingredients may change, please always read product labels carefully in addition to using the information provided by Erudus One.

We do not accept liability for any inaccuracies or incorrect information contained on this site. Please visit <http://www.erudus.com/terms-and-conditions> for full terms and conditions.

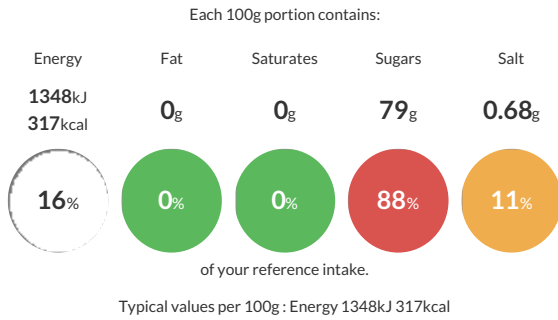
## LYLES GOLDEN SYRUP 2X7.257KG POLY CONT

Short Product Name:  
GOLDEN SYRUP

A golden colour invert, formed of a combination of sucrose, glucose and fructose found naturally in sugar cane. More commonly known as Lyle's Golden Syrup, it has rich caramel and honey-like flavours. Golden Cane Invert Syrup 50 - 83 reduces water activity, lowers freezing point, increases humectancy and adds texture, colour and flavour to cereal bars, puddings and cakes.

Traded Unit GTIN: 05010115002801 Internal GTIN: 5010115902996 Supplier: Tate & Lyle Sugars Suppliers Product Code: 410277

### Reference Intake



### Nutritional Information

Typical Values	Per 100g
Energy	1348kJ 317kCal
Carbohydrates	79g
of which sugars	79g
Fat	0g
of which saturates	0g
Fibre	0g
Protein	0.3g
Salt	0.68g

### Allergy Information

Key: Contains May Contain



### Allergen Statement

This product is Allergen free as defined by European Regulation (EU) 1169/2011 and European Commission Regulation (EC) 41/2009 (Gluten  $\leq$  20ppm).

### Ingredients

Partially inverted refiners syrup

### Dietary Information

Key: Suitable for

