

Supplier's Product Code :
 Product Added :
 Last Updated by Supplier :
 erudus id :

12537542
 02 January 2024
 02 January 2024
 73635655390f4dfaafe0b97d51a9cca9



The information on the **Erudus System** has been supplied by the manufacturers of the products and, whilst the owners of the Erudus System take steps to ensure the information is regularly updated, they give no warranty and no guarantee that the information is accurate. Product information and ingredients may change, please always read product labels carefully in addition to using the information provided by Erudus One.

We do not accept liability for any inaccuracies or incorrect information contained on this site. Please visit <http://www.erudus.com/terms-and-conditions> for full terms and conditions.

NESTLE The Big Biscuit Box 69 Pcs

Short Product Name:

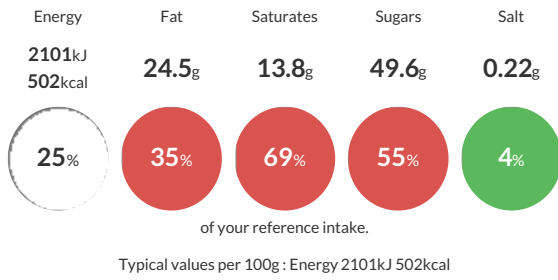
NESTLE Big Biscuit Box. NESTLE KIT KAT and friends.

An assortment of 69 chocolate biscuit bars including KIT KAT , BLUE RIBAND and TOFFEE CRISP.

Traded Unit GTIN: **08445290576095** Internal GTIN: **08445290576095** Supplier: **Nestle UK** Suppliers Product Code: **12537542**

Reference Intake

Each 100g portion contains:



Nutritional Information

Typical Values	Per 100g
Energy	2101kJ 502kCal
Carbohydrates	62.5g
of which sugars	49.6g
Fat	24.5g
of which saturates	13.8g
Fibre	2.3g
Protein	6.9g
Salt	0.22g

Allergy Information

Key: **Contains** **May Contain**



Allergen Statement

Contains **WHEAT & BARLEY**. **TOFFEE CRISP** and **BLUE RIBAND** may contain **PEANUTS**, **TREE NUTS** and **SOYA**.

Dietary Information

Key: **Suitable for**



Ingredients

KITKAT 2 finger MILK 21x20.7g

Two crispy wafer fingers covered with milk chocolate (66%)

Ingredients- sugar, **WHEAT** flour (contains calcium, iron, thiamin and niacin), whole **MILK** powder, cocoa mass, cocoa butter, vegetable fats (palm, shea, palm kernel, sal), whey powder product (**MILK**), skimmed **MILK** powder, emulsifier (lecithins), yeast, raising agent (sodium bicarbonate), glucose syrup, butterfat (**MILK**), whey powder (**MILK**), natural flavourings.

Rainforest alliance certified cocoa. Find out more at ra.org

KITKAT 2 finger Dark 9x20.7g

Two crispy wafer fingers covered in dark chocolate (66%).

Ingredients- sugar, cocoa mass, **WHEAT** flour (contains calcium, iron, thiamin and niacin), vegetable fats (palm, shea, palm kernel, shea, sal), cocoa butter, butterfat (**MILK**), emulsifier (lecithins), whole **MILK** powder, whey powder product (**MILK**), yeast, raising agent (sodium bicarbonate), skimmed **MILK** powder, glucose syrup, whey powder (**MILK**), natural flavourings.

Rainforest alliance certified cocoa. Find out more at ra.org

KITKAT 2 finger Orange 9x20.7g

Two crispy wafer fingers covered in orange chocolate (66%).

Ingredients- sugar, **WHEAT** flour (contains calcium, iron, thiamin and niacin), whole **MILK** powder, cocoa mass, cocoa butter, vegetable fats (palm, shea, palm kernel, sal), whey powder product (**MILK**), skimmed **MILK** powder, emulsifier (lecithins), natural orange flavouring, yeast, raising agent (sodium bicarbonate), glucose syrup, butterfat (**MILK**), whey powder (**MILK**), natural flavourings.

Rainforest alliance certified cocoa. Find out more at ra.org

TOFFEE CRISP 14x18.7g

Biscuit pieces, crisped cereal (14%) and caramel (20%) covered in milk chocolate.

Ingredients- sugar, vegetable fats (palm, coconut, shea, sunflower), glucose-fructose syrup, **WHEAT** flour, whey powder product (**MILK**), sweetened condensed **MILK** (**MILK**, sugar), cocoa butter, rice flour, dried whole **MILK**, cocoa mass, fat-reduced cocoa powder, emulsifier (lecithins), salt, malted **BARLEY** flour, firming agent (calcium carbonate), caramelised sugar, raising agent (sodium bicarbonate), **WHEAT** starch, flavouring.

BLUE RIBAND 16x18g

Crisp wafer biscuit covered in real milk chocolate (47%).

Ingredients- sugar, **WHEAT** flour, vegetable fats (palm, shea), cocoa butter, whole **MILK** powder, cocoa mass, whey powder (**MILK**), maltodextrin, emulsifier (lecithins), fat-reduced cocoa powder, flavourings, raising agent (sodium bicarbonate), salt.

Occasionally it may be necessary to replace a biscuit with another of equally high quality.