

Supplier's Product Code :  
Product Added :  
Last Updated by Supplier :  
erudus id :

'06705  
17 June 2013  
23 January 2023  
749d9abd44354cff8fd671c40df9b1da



The information on the **Erudus System** has been supplied by the manufacturers of the products and, whilst the owners of the Erudus System take steps to ensure the information is regularly updated, they give no warranty and no guarantee that the information is accurate. Product information and ingredients may change, please always read product labels carefully in addition to using the information provided by Erudus One.

We do not accept liability for any inaccuracies or incorrect information contained on this site. Please visit <http://www.erudus.com/terms-and-conditions> for full terms and conditions.

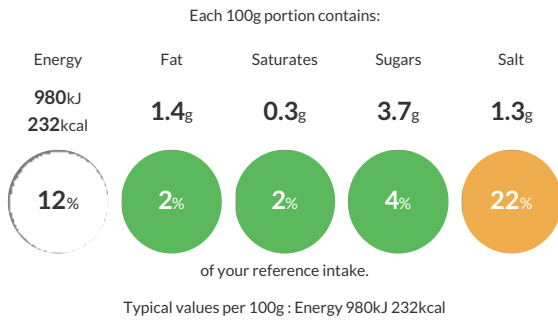
## 40 BROWN SANDWICH BAGUETTES 135g

Short Product Name:  
BROWN BAGUETTE

half-baguette with 2 cuts

Traded Unit GTIN: **3516870067052** Internal GTIN: Supplier: **Planète Pain** Suppliers Product Code: **'06705**

### Reference Intake



### Nutritional Information

Typical Values	Per 100g
Energy	980kJ 232kCal
Carbohydrates	44.7g
of which sugars	3.7g
Fat	1.4g
of which saturates	0.3g
Fibre	5.1g
Protein	8.3g
Salt	1.3g

### Allergy Information

Key: **Contains** **May Contain**



### Dietary Information

Key: **Suitable for**



### Ingredients

WHEAT flour, water, bran WHEAT, yeast, salt, WHEAT GLUTEN, four treatment agent E 300, malted WHEAT flour, enzymes.