

Supplier's Product Code :  
Product Added :  
Last Updated by Supplier :  
erudus id :

MCC4x5  
11 April 2024  
11 April 2024  
75722ee5e3fc48239d9e875f227a9c8f



The information on the Erudus System has been supplied by the manufacturers of the products and, whilst the owners of the Erudus System take steps to ensure the information is regularly updated, they give no warranty and no guarantee that the information is accurate. Product information and ingredients may change, please always read product labels carefully in addition to using the information provided by Erudus One.

We do not accept liability for any inaccuracies or incorrect information contained on this site. Please visit <http://www.erudus.com/terms-and-conditions> for full terms and conditions.

## Mint Choc Chip : 4 x 5 Litre

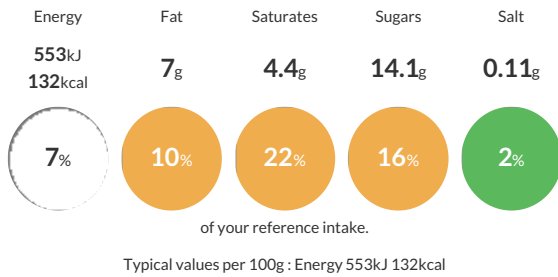
Short Product Name:  
Mint Chocolate Chip Ice Cream

Mint Choc Chip Ice Cream - A naturally flavoured, refreshing mint Ice Cream with pieces of milk chocolate.

Traded Unit GTIN: 5060016671354 Internal GTIN: 5060016671347 Supplier: Yorvale Ltd Suppliers Product Code: MCC4x5

### Reference Intake

Each 100g portion contains:



### Nutritional Information

Typical Values	Per 100g
Energy	553kJ 132kCal
Carbohydrates	15.3g
of which sugars	14.1g
Fat	7g
of which saturates	4.4g
Fibre	0.11g
Protein	2.8g
Salt	0.11g

### Allergy Information

Key: Contains May Contain



### Dietary Information

Key: Suitable for



### Allergen Statement

This product has been produced in a factory that uses nut ingredients.

### Ingredients

Whole **MILK**, Double Cream (**MILK**), Sugar, **MILK** Chocolate Chips (8.7%)(Sugar, Cocoa Butter, Skimmed **MILK** Powder, Cocoa Mass, Whole **MILK** Powder, Whey Powder (**MILK**), Anhydrous **MILK** Fat, Emulsifier: **SOYA** Lecithin, Natural Vanilla Flavouring), Skimmed **MILK** Powder, Glucose Syrup, Emulsifier: Mono- and Diglycerides of Fatty Acids, Stabilisers (Guar Gum, Carrageenan, Locust Bean Gum), Natural Flavouring, Natural Green Colouring.