

Supplier's Product Code :  
Product Added :  
Last Updated by Supplier :  
erudus id :

TBLCHB  
21 January 2013  
22 February 2023  
75b34a3d45a1445faea89d230ab94bbb



The information on the **Erudus System** has been supplied by the manufacturers of the products and, whilst the owners of the Erudus System take steps to ensure the information is regularly updated, they give no warranty and no guarantee that the information is accurate. Product information and ingredients may change, please always read product labels carefully in addition to using the information provided by Erudus One.

We do not accept liability for any inaccuracies or incorrect information contained on this site. Please visit <http://www.erudus.com/terms-and-conditions> for full terms and conditions.

## Luxury Belgian Chocolate Brownie Tray Bake

Short Product Name:

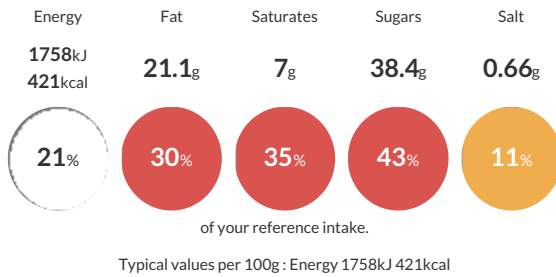
Belgian Chocolate Brownie Tray Bake

A luxurious rich chocolate brownie packed with dark Belgian chocolate chunks

Traded Unit GTIN: **5060158952939** Internal GTIN: Supplier: **Love Handmade Cakes (Exquisite Handmade Cakes)** Suppliers Product Code: **TBLCHB**

### Reference Intake

Each 100g portion contains:



### Nutritional Information

Typical Values	Per 100g
Energy	1758kJ 421kCal
Carbohydrates	48.2g
of which sugars	38.4g
Fat	21.1g
of which saturates	7g
Fibre	-g
Protein	5.7g
Salt	0.66g

### Allergy Information

Key: **Contains** **May Contain**



### Dietary Information

Key: **Suitable for**



### Allergen Statement

For allergens, including cereals containing gluten, see ingredients in **BOLD**. May contain peanuts, nuts and other gluten containing sources due to manufacturing methods.

### Ingredients

Sugar, Fat Reduced Cocoa Powder, **WHEAT** Flour, Water, Rapeseed Oil, Dark Chocolate Chunks (11%) [Cocoa Mass (50%), Sugar, Emulsifier (**SOYA** Lecithin), Natural Vanilla Flavouring], Vegetable Fat (Palm), Whey Powder (**MILK**), Dextrose, **EGG** White Powder, Roasted **WHEAT** Malt Flour, Humectant (Glycerine), Raising Agents (E450, E500, E341), Emulsifier (E471), Salt, Thickeners (Xanthan Gum).