

Supplier's Product Code :  
Product Added :  
Last Updated by Supplier :  
erudus id :

F02475  
28 March 2023  
05 April 2023  
76a764a380da4e6183267be56786c14b



The information on the **Erudus System** has been supplied by the manufacturers of the products and, whilst the owners of the Erudus System take steps to ensure the information is regularly updated, they give no warranty and no guarantee that the information is accurate. Product information and ingredients may change, please always read product labels carefully in addition to using the information provided by Erudus One.

We do not accept liability for any inaccuracies or incorrect information contained on this site. Please visit <http://www.erudus.com/terms-and-conditions> for full terms and conditions.

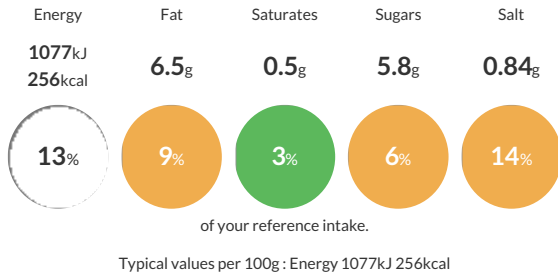
## Genius Soft Brown Farmhouse 6 x 430g

Gluten free brown farmhouse sliced loaf

Traded Unit GTIN: **5060746960568** Internal GTIN: **5060746960490** Supplier: **Kara Foodservice (Fletchers)** Suppliers Product Code: **F02475**

### Reference Intake

Each 100g portion contains:



### Nutritional Information

Typical Values	Per 100g
Energy	1077kJ 256kCal
Carbohydrates	43g
of which sugars	5.8g
Fat	6.5g
of which saturates	0.5g
Fibre	6.9g
Protein	2.3g
Salt	0.84g

### Allergy Information

Key: **Contains** **May Contain**



#### Gluten Claim

Gluten content is less than 20ppm.

#### Allergen Statement

For allergens, see ingredients in **CAPITALS**

### Ingredients

Water, Starches (Maize, Potato, Tapioca), Rice Flour, Rapeseed Oil, Humectant (Vegetable Glycerol), Linseed, Psyllium Husk, Yeast, Stabilisers (Hydroxypropyl Methyl Cellulose, Xanthan Gum), Black Treacle, Dried EGG White, Iodised Salt (Salt, Potassium Iodate), Apple Extract, Fermented Maize Starch, Millet Flakes.

### Dietary Information

Key: **Suitable for**

