

Supplier's Product Code :  
Product Added :  
Last Updated by Supplier :  
erudus id :

12235960  
05 January 2016  
12 September 2023  
76e2af7a95c642faa751902919aae9d4



The information on the Erudus System has been supplied by the manufacturers of the products and, whilst the owners of the Erudus System take steps to ensure the information is regularly updated, they give no warranty and no guarantee that the information is accurate. Product information and ingredients may change, please always read product labels carefully in addition to using the information provided by Erudus One.

We do not accept liability for any inaccuracies or incorrect information contained on this site. Please visit <http://www.erudus.com/terms-and-conditions> for full terms and conditions.

## MAGGI BECHAMEL SAUCE 2X2KG

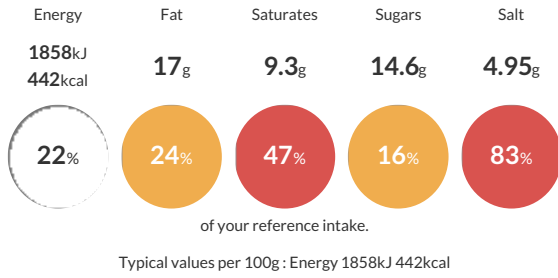
Short Product Name:  
MAGGI® Bechamel Sauce-2kg

Dehydrated Bechamel sauce

Traded Unit GTIN: 07613031292653 Internal GTIN: 7613031292646 Supplier: Nestle UK Suppliers Product Code: 12235960

### Reference Intake

Each 100g portion contains:



### Nutritional Information

Typical Values	Per 100g
Energy	1858kJ 442kCal
Carbohydrates	63.7g
of which sugars	14.6g
Fat	17g
of which saturates	9.3g
Fibre	0.9g
Protein	8g
Salt	4.95g

### Allergy Information

Key: **Contains** **May Contain**



### Dietary Information

Key: **Suitable for**



### Allergen Statement

May contain traces of EGG, SOYA, CELERY and MUSTARD.

### Ingredients

Ingredients: modified starch, WHEAT flour, palm fat, maltodextrin, skimmed MILK powder, sugar, iodised salt (salt, potassium iodate), lactose (MILK), MILK protein, palm oil, yeast extract, flavourings (MILK), acid (citric acid), salt, onion.