

Supplier's Product Code :
Product Added :
Last Updated by Supplier :
erudus id :

BWEL225
27 November 2024
27 November 2024
7714122253846fbc9fb152e88e26e2



The information on the [Erudus System](#) has been supplied by the manufacturers of the products and, whilst the owners of the Erudus System take steps to ensure the information is regularly updated, they give no warranty and no guarantee that the information is accurate. Product information and ingredients may change, please always read product labels carefully in addition to using the information provided by Erudus One.

We do not accept liability for any inaccuracies or incorrect information contained on this site. Please visit <http://www.erudus.com/terms-and-conditions> for full terms and conditions.

Beetroot Wellington 225g x 16

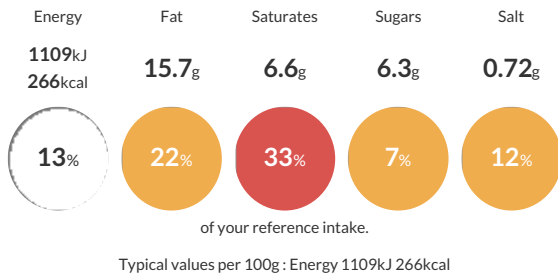
Short Product Name:
Beetroot Wellington

A Beetroot mix encased in puff pastry.

Traded Unit GTIN: **5055775108029** Internal GTIN: Supplier: **Scheff Foods Ltd** Suppliers Product Code: **BWEL225**

Reference Intake

Each 100g portion contains:



Nutritional Information

Typical Values	Per 100g
Energy	1109kJ 266kCal
Carbohydrates	23.9g
of which sugars	6.3g
Fat	15.7g
of which saturates	6.6g
Fibre	2.5g
Protein	5.9g
Salt	0.72g

Allergy Information

Key: **Contains** **May Contain**



Dietary Information

Key: **Suitable for**



Ingredients

Puff Pastry (Fortified **WHEAT** Flour (Calcium Carbonate, Iron, Niacin, Thiamin), Margarine (Palm Oil, Water, Rapeseed Oil, Salt), Water) (49%), Beetroot (23%), Onion, **SOYA** Mince, Rapeseed Oil, Tomato Puree, Red Wine Vinegar, Cornflour, Herbs and Spices, Sugar, Vital **WHEAT** Gluten, Lemon Juice, Salt, Vegetable Gravy Mix (Modified Maize Starch, Cornflour, Salt, Hydrolysed **SOYA** & Maize Protein, Flavouring, Yeast Extract, Dried Glucose Syrup, Colour E150c, Sugar, Palm Fat Powder), Fortified **WHEAT** Flour (Calcium Carbonate, Niacin, Iron, Thiamin), Acid E330, Gravy Browning (Water, Colour E150c, Salt) and Natural Smoke Flavouring.