

Supplier's Product Code :  
Product Added :  
Last Updated by Supplier :  
erudus id :

2002  
18 March 2008  
13 July 2022  
776b387476e44bfab9b7ae7470e798bf



The information on the **Erudus System** has been supplied by the manufacturers of the products and, whilst the owners of the Erudus System take steps to ensure the information is regularly updated, they give no warranty and no guarantee that the information is accurate. Product information and ingredients may change, please always read product labels carefully in addition to using the information provided by Erudus One.

We do not accept liability for any inaccuracies or incorrect information contained on this site. Please visit <http://www.erudus.com/terms-and-conditions> for full terms and conditions.

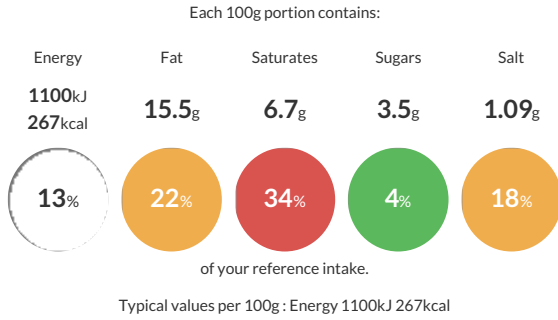
## FU Steak & Kidney Pie (32 x 195g approx)

Short Product Name:

Shortcrust pastry base, filled with steak & kidney in a rich gravy and topped with a puff pastry lid.

Traded Unit GTIN: **05018833020022** Internal GTIN: Supplier: **Wrights Food Group** Suppliers Product Code: **2002**

### Reference Intake



### Nutritional Information

Typical Values	Per 100g
Energy	1100kJ 267kCal
Carbohydrates	21.9g
of which sugars	3.5g
Fat	15.5g
of which saturates	6.7g
Fibre	1.9g
Protein	9g
Salt	1.09g

### Allergy Information

Key: **Contains** **May Contain**



#### Allergen Statement

Allergens: For allergens (including cereals containing gluten) see ingredients in **UPPER CASE**.  
May contain Nuts.  
Bone warning: Although every care has been taken to remove bones, small bones may remain.

### Ingredients

Water, **WHEAT** Flour (contains Calcium carbonate, Iron, Niacin, Thiamin), Beef (17%), Margarine [Palm Oil, Palm Stearin, Water, Salt, Rapeseed Oil, Emulsifier (E471), Acidity Regulator (E330), Lemon Juice Concentrate], Kidney (7%), Vegetable Shortening [Palm Oil, Rapeseed Oil, Palm Stearin], Thickener (E1422), Glaze [Water, Modified Maize Starch, Rapeseed Oil, **MILK** Proteins, Emulsifiers (**SOYA** Lecithin, E471), Acidity Regulator (E339iii), Colour (E160a)], Salt, Malt Extract (**BARLEY**), Raising Agents (E450i, E500ii), Caramelised Sugar, White Pepper.

### Dietary Information

Key: **Suitable for**

