

Supplier's Product Code :  
Product Added :  
Last Updated by Supplier :  
erudus id :

CARHON4x5  
10 September 2009  
29 November 2023  
77ba4e9df13f475ba5e535f5e2a488be



The information on the Erudus System has been supplied by the manufacturers of the products and, whilst the owners of the Erudus System take steps to ensure the information is regularly updated, they give no warranty and no guarantee that the information is accurate. Product information and ingredients may change, please always read product labels carefully in addition to using the information provided by Erudus One.

We do not accept liability for any inaccuracies or incorrect information contained on this site. Please visit <http://www.erudus.com/terms-and-conditions> for full terms and conditions.

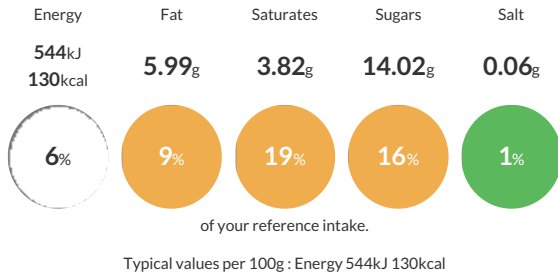
## Caramel Honeycombe : 4 x 5 litre

Caramel Honeycombe Ice Cream - A natural creamy Ice Cream swirled with caramel sauce and chocolate coated honeycomb pieces.

Traded Unit GTIN: 5060016670784 Internal GTIN: 5060016670777 Supplier: Yorvale Ltd Suppliers Product Code: CARHON4x5

### Reference Intake

Each 100g portion contains:



### Nutritional Information

Typical Values	Per 100g
Energy	544kJ 130kCal
Carbohydrates	16.76g
of which sugars	14.02g
Fat	5.99g
of which saturates	3.82g
Fibre	-g
Protein	2.28g
Salt	0.06g

### Allergy Information

Key: Contains May Contain



### Dietary Information

Key: Suitable for



### Allergen Statement

This product has been made in a factory that handles nut ingredients.

### Ingredients

whole MILK, double cream (MILK), sugar, caramel sauce (8%) : (sweetened condensed skimmed MILK, glucose syrup, caramel syrup, colour:burnt sugar syrup, water,sugar, salted butter ( MILK). Stabiliser:modified waxy maize starch, sea salt, natural flavouring, emulsifier: mono & di glycerides of fatty acids). MILK chocolate honeycomb (8%): (MILK )chocolate:sugar,cocoa butter, cocoa mass, skimmed MILK powder,MILK sugar, whey powder (MILK), anhydrous MILK fat, emulsifier: SOYA lecithin, honeycomb granules: sugar, glucose syrup, water, raising agent:E500, glazing agent, stabiliserE414, sucrose, honey). skimmed MILK powder, glucose syrup, emulsifier: mono glycerides of fatty acids. stabiliser: guar gum, carrageenan, locust bean gum.