

Supplier's Product Code :
Product Added :
Last Updated by Supplier :
erudus id :

MRC16614
09 January 2024
10 January 2024
77e0ec8dad94ad58ec4343073105f30



The information on the **Erudus System** has been supplied by the manufacturers of the products and, whilst the owners of the Erudus System take steps to ensure the information is regularly updated, they give no warranty and no guarantee that the information is accurate. Product information and ingredients may change, please always read product labels carefully in addition to using the information provided by Erudus One.

We do not accept liability for any inaccuracies or incorrect information contained on this site. Please visit <http://www.erudus.com/terms-and-conditions> for full terms and conditions.

Ham & Cheese Panini 12 x 124g

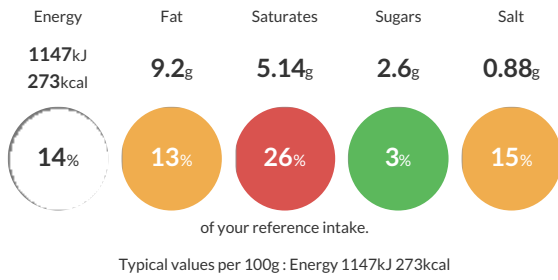
Short Product Name:
Ham & Cheese Panini

Stone baked panini hand filled with ham topped with a mature cheddar cheese

Traded Unit GTIN: **05390634005287** Internal GTIN: **5390634003177** Supplier: **Quality Irish Food** Suppliers Product Code: **MRC16614**

Reference Intake

Each 100g portion contains:



Nutritional Information

Typical Values	Per 100g
Energy	1147kJ 273kCal
Carbohydrates	33g
of which sugars	2.6g
Fat	9.2g
of which saturates	5.14g
Fibre	2.7g
Protein	16g
Salt	0.88g

Allergy Information

Key: **Contains** **May Contain**



Dietary Information

Key: **Suitable for**



Allergen Statement

For Allergens, including cereals containing gluten, see ingredients highlighted in bold

Ingredients

Panini [**WHEAT** Flour (**WHEAT** Flour, Calcium Carbonate, Iron, Niacin, Thiamin), Water, Vegetable Oils (Palm, Rapeseed), Sugar, Dried Skimmed **MILK**, Salt, Yeast, Extra Virgin Olive Oil, Semolina **WHEAT**, Emulsifier (Mono- and Di-Glycerides of Fatty Acids), **WHEAT** Gluten, Malted **WHEAT** Flour, Flour Treatment Agent (Ascorbic Acid)], Cooked Ham (24%) [Pork (95%), Salt, Sugar, Pork Protein, Antioxidant (Sodium Ascorbate), Stabilizer (Di-Phosphates), Preservative (Sodium Nitrite)], Mature White Cheddar Cheese (18%) (**MILK**).