

Supplier's Product Code : 135126
 Product Added : 10 August 2023
 Last Updated by Supplier : 10 August 2023
 erudus id : 78142cc5568e4b7587f5fa0e599e620e



The information on the Erudus System has been supplied by the manufacturers of the products and, whilst the owners of the Erudus System take steps to ensure the information is regularly updated, they give no warranty and no guarantee that the information is accurate. Product information and ingredients may change, please always read product labels carefully in addition to using the information provided by Erudus One.

We do not accept liability for any inaccuracies or incorrect information contained on this site. Please visit <http://www.erudus.com/terms-and-conditions> for full terms and conditions.

La Boulangerie Ready to Bake Pain au Chocolat

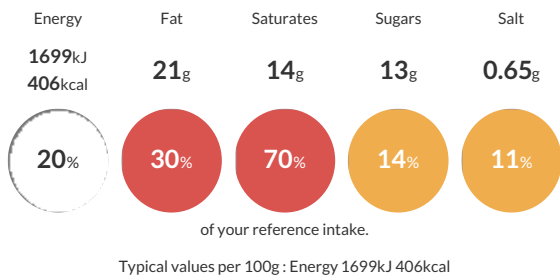
Short Product Name:
Ready to Bake Pain au Chocolat

Ready to Bake Pain au Chocolat

Traded Unit GTIN: 5024333254782 Internal GTIN: 5024333254782 Supplier: Brake Bros Ltd Suppliers Product Code: 135126

Reference Intake

Each 100g portion contains:



Nutritional Information

Typical Values	Per 100g
Energy	1699kJ 406kCal
Carbohydrates	44g
of which sugars	13g
Fat	21g
of which saturates	14g
Fibre	1.2g
Protein	8.4g
Salt	0.65g

Allergy Information

Key: Contains May Contain

Contains Cereal/Gluten	Contains Milk	Contains Eggs	Does Not Contain Peanuts	May Contain Nuts	Does Not Contain Crustaceans	Does Not Contain Mustard
Does Not Contain Fish	Does Not Contain Lupin	Does Not Contain Sesame	Does Not Contain Celery	May Contain Soya	Does Not Contain Molluscs	Does Not Contain Sulphur Dioxide

Dietary Information

Key: Suitable for

Suitable for Vegetarian	May not be suitable for Vegan	May not be suitable for Kosher	May not be suitable for Halal	May not be suitable for Coeliac
-------------------------	-------------------------------	--------------------------------	-------------------------------	---------------------------------

Ingredients

WHEAT Flour(WHEAT Flour, Calcium Carbonate, Niacin, Iron, Thiamin), Water, Butter (MILK) (16%), Dark Chocolate Filling (10%)(Sugar, Cocoa Mass, Cocoa Butter, Emulsifier(Sunflower Lecithin)), Sugar, Yeast, WHEAT Gluten, EGG, Salt, WHEAT Flour, Flour Treatment Agent(Ascorbic Acid).