

Supplier's Product Code :
Product Added :
Last Updated by Supplier :
erudus id :

CHD-MO-D-E0-X27
29 February 2024
29 February 2024
784d86c71e2242e8908f4832cd144219



The information on the **Erudus System** has been supplied by the manufacturers of the products and, whilst the owners of the Erudus System take steps to ensure the information is regularly updated, they give no warranty and no guarantee that the information is accurate. Product information and ingredients may change, please always read product labels carefully in addition to using the information provided by Erudus One.

We do not accept liability for any inaccuracies or incorrect information contained on this site. Please visit <http://www.erudus.com/terms-and-conditions> for full terms and conditions.

INSTANT POWDER FOR CHOCOLATE MOUSSE

Short Product Name:

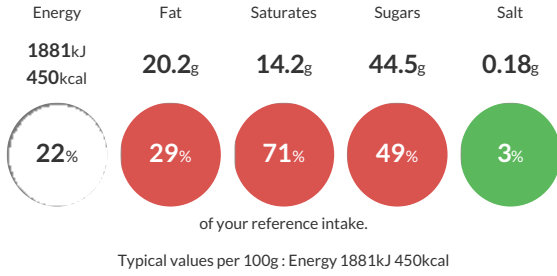
INSTANT POWDER FOR CHOCOLATE MOUSSE

CALLEBAUT...Great taste in just 3 easy steps. Nothing beats the taste and texture of your homemade chocolate mousse

Traded Unit GTIN: **5410522545845** Internal GTIN: **5410522545852** Supplier : **Barry Callebaut Belgium NV & IBC Belgium** Suppliers Product Code : **CHD-MO-D-E0-X27**

Reference Intake

Each 100g portion contains:



Nutritional Information

Typical Values	Per 100g
Energy	1881kJ 450kCal
Carbohydrates	47.5g
of which sugars	44.5g
Fat	20.2g
of which saturates	14.2g
Fibre	10g
Protein	13.4g
Salt	0.18g

Allergy Information

Key: **Contains** **May Contain**



Allergen Statement
CONTAINS MILK

Ingredients

Chocolate 75.0%,(Cocoa mass 30.0%,sugar 24.0%,skimmed **MILK** powder 24.0%,fat-reduced cocoa powder 21.5%,emulsifier **SOYA** lecithin <1%,natural vanilla flavouring <1%), sugar 10.0%,glucose syrup 5.0%,fully hydrogenated vegetable fat (palm kernel) 4.5%,colour E150d 2.0%,fat-reduced cocoa powder 1.0%,**MILK** proteins <1%,emulsifier mono and diglycerides of fatty acids <1%,stabiliser E340ii <1%,emulsifier E472a <1%

Dietary Information

Key: **Suitable for**

