

Supplier's Product Code :  
Product Added :  
Last Updated by Supplier :  
erudus id :

ITM1155  
24 October 2019  
15 February 2022  
79010fd5594c46c2b85500e9290b7620



The information on the [Erudus System](#) has been supplied by the manufacturers of the products and, whilst the owners of the Erudus System take steps to ensure the information is regularly updated, they give no warranty and no guarantee that the information is accurate. Product information and ingredients may change, please always read product labels carefully in addition to using the information provided by Erudus One.

We do not accept liability for any inaccuracies or incorrect information contained on this site. Please visit <http://www.erudus.com/terms-and-conditions> for full terms and conditions.

## Barber's Farmhouse Mature Cheddar 8 x 2kg

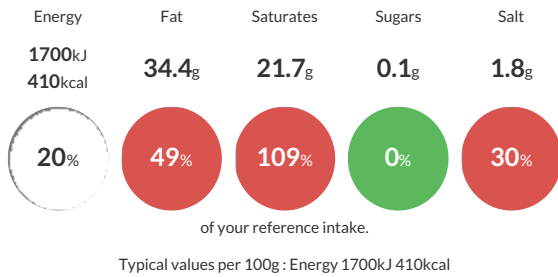
Short Product Name:  
Mature Cheddar

Made with traditional starter cultures, West Country milk and using age-old methods, Barber's Farmhouse Mature Cheddar has PDO status. Typically matured for up to 12 months.

Traded Unit GTIN: **95016694410047** Internal GTIN: Supplier: **A J & R G Barber Ltd** Suppliers Product Code: **ITM1155**

### Reference Intake

Each 100g portion contains:



### Nutritional Information

Typical Values	Per 100g
Energy	1700kJ 410kCal
Carbohydrates	0.1g
of which sugars	0.1g
Fat	34.4g
of which saturates	21.7g
Fibre	-g
Protein	25g
Salt	1.8g

### Allergy Information

Key: **Contains** **May Contain**



#### Gluten Claim

Gluten content is less than 20ppm.

#### Allergen Statement

For allergens, see ingredients in bold

### Ingredients

Cheddar Cheese (cows' **MILK**)

### Dietary Information

Key: **Suitable for**

